

**Figure S1: TGFβ1 stimulates Rheb expression at transcriptional level in NRK-49F cells.** A: Real time PCR assay for Rheb mRNA expression, “\*” indicates  $P < 0.05$  compared to control (n=3); B: Rheb protein expression after Actinomycin D treatment, “\*” indicates  $P < 0.05$  compared to control cells (n=3), “#” indicates  $P < 0.05$  compared to TGFβ1 treated cells (n=3); C: Rheb protein expression after CHX treatment, “\*” indicates  $P < 0.05$  compared to control cells (n=3), “#” indicates  $P < 0.05$  compared to TGFβ1 treated cells (n=3).

**Figure S2: Characterization of the primary cultural kidney fibroblasts.** A: Vimentin staining; B: Fsp1 staining.

**Figure S3: Macrophage infiltration in the kidney tissue.** A: Representative images for anti-F4/80 staining in the kidney tissues from Control, UUO, p-CAG-Rheb or Fibro-Tac1<sup>-/-</sup> mice; B: Quantitative analysis for macrophage infiltration, “\*” indicates  $P < 0.05$  compared to control (n=3~4).

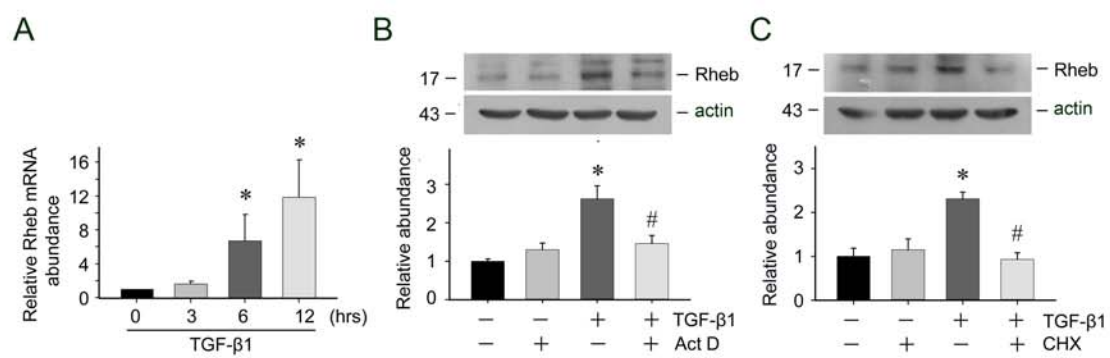


Fig. S1

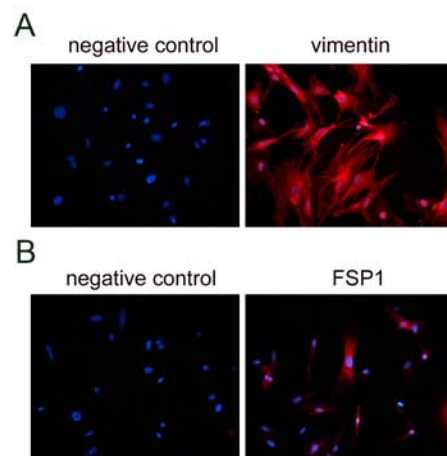


Fig. S2

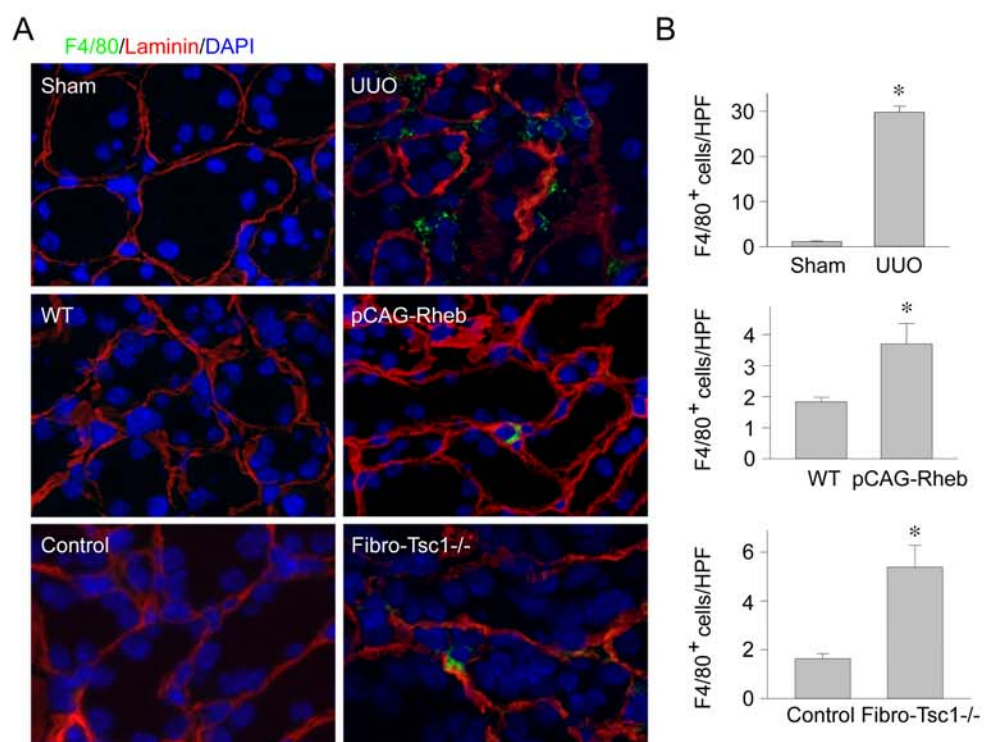


Fig. S3