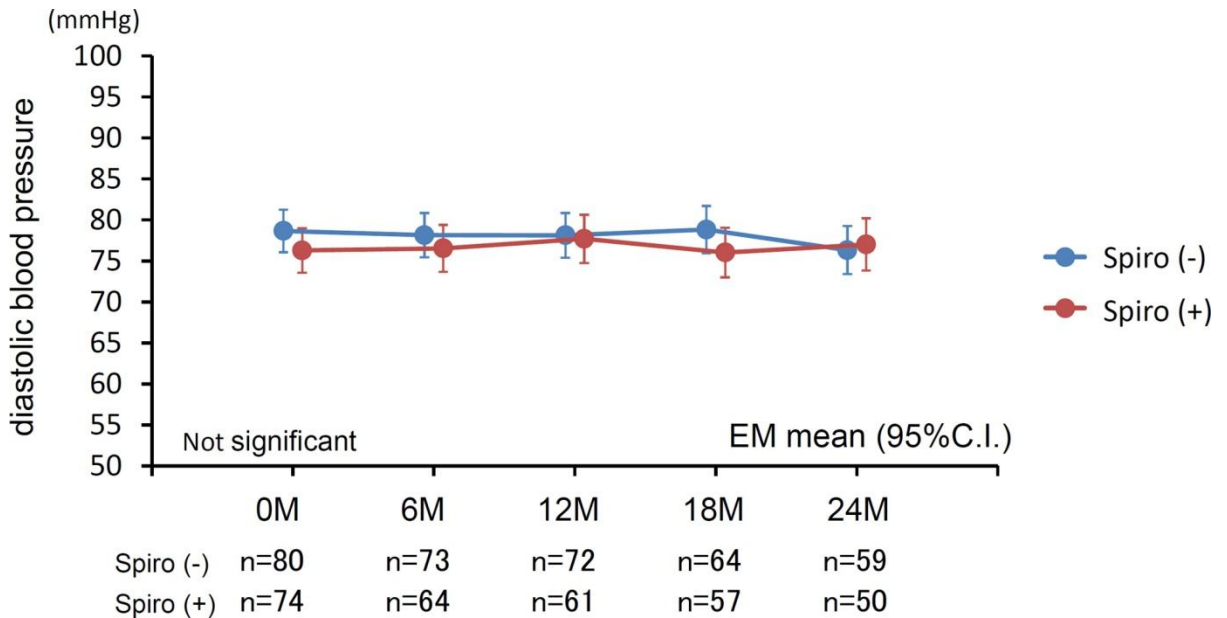
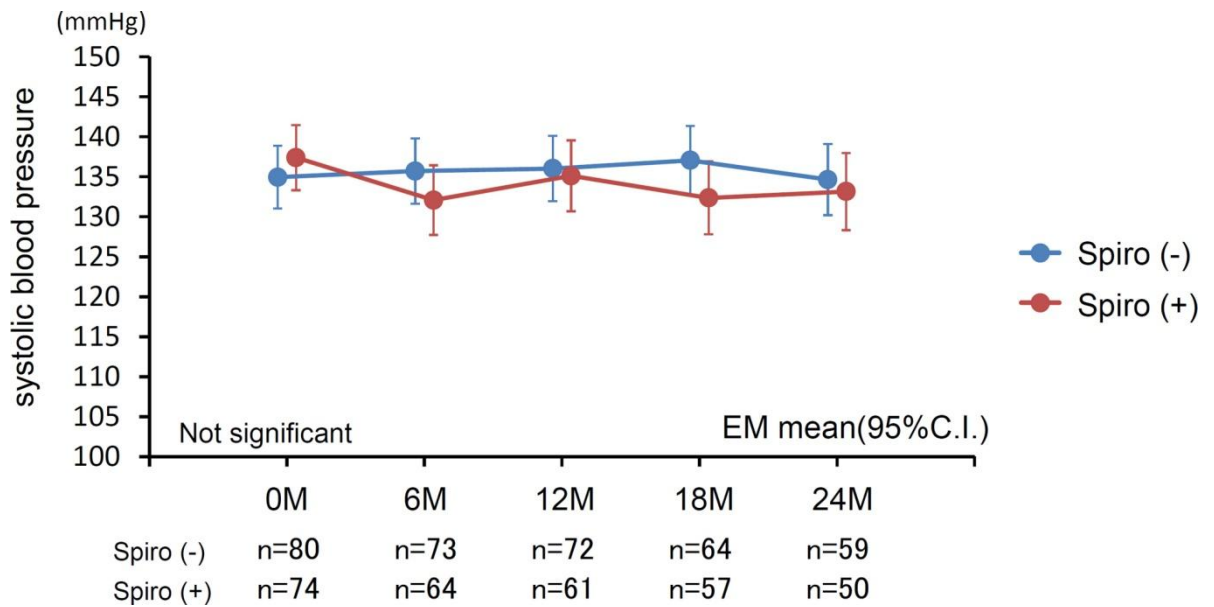


Supplementary Figures

Long-term effects of spironolactone in peritoneal dialysis patients

Yasuhiko Ito¹, Masashi Mizuno¹, Yasuhiro Suzuki¹, Hirofumi Tamai²,
Takeyuki Hiramatsu³, Hiroshige Ohashi⁴, Isao Ito⁵, Hirotake Kasuga⁶,
Masanobu Horie⁷, Shoichi Maruyama¹, Yukio Yuzawa⁸, Tatsuaki Matsubara⁹,
and Seiichi Matsuo¹ on behalf of the Nagoya Spiro Study Group

¹Nephrology and Renal Replacement Therapy, Nagoya University, Nagoya, Japan
Nagoya Spiro Study Group including ²Anjyo Kosei Hospital, Konan Kosei Hospital³,
Gifu Prefectural General Medical Center⁴, Yokkaichi Municipal Hospital⁵,
Nagoya Kyoritsu Hospital⁶, Daiyukai Daiichi Hospital⁷, Fujita Health University⁸,
Aichi Gakuin University⁹

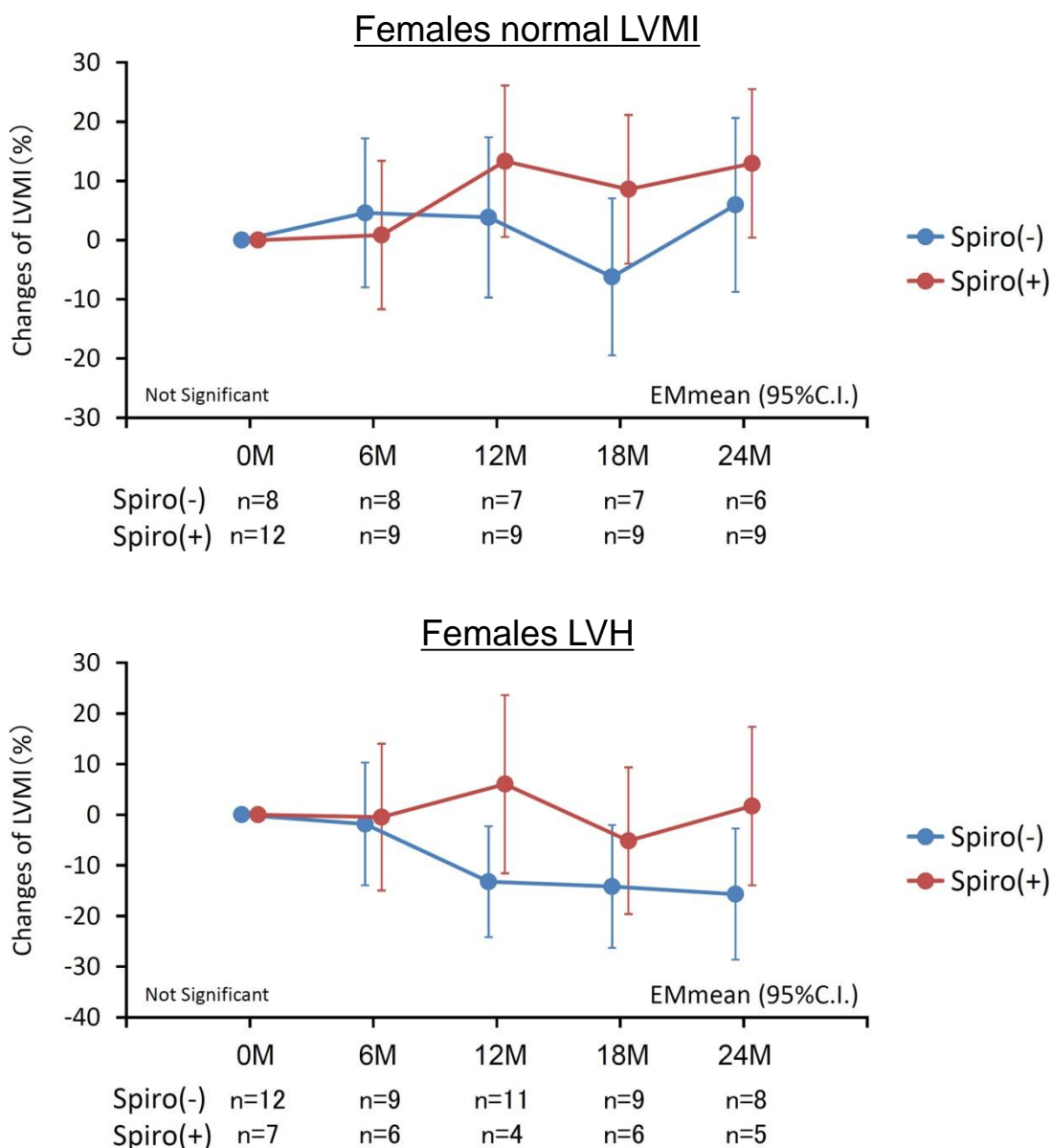


Supplementary Figure 1. Blood pressure in spironolactone treatment and control group.

Systolic and diastolic blood pressure did not differ between groups during the observation period.

Spiro (-): control group; Spiro (+): spironolactone treatment group.

Supplementary Figure 1

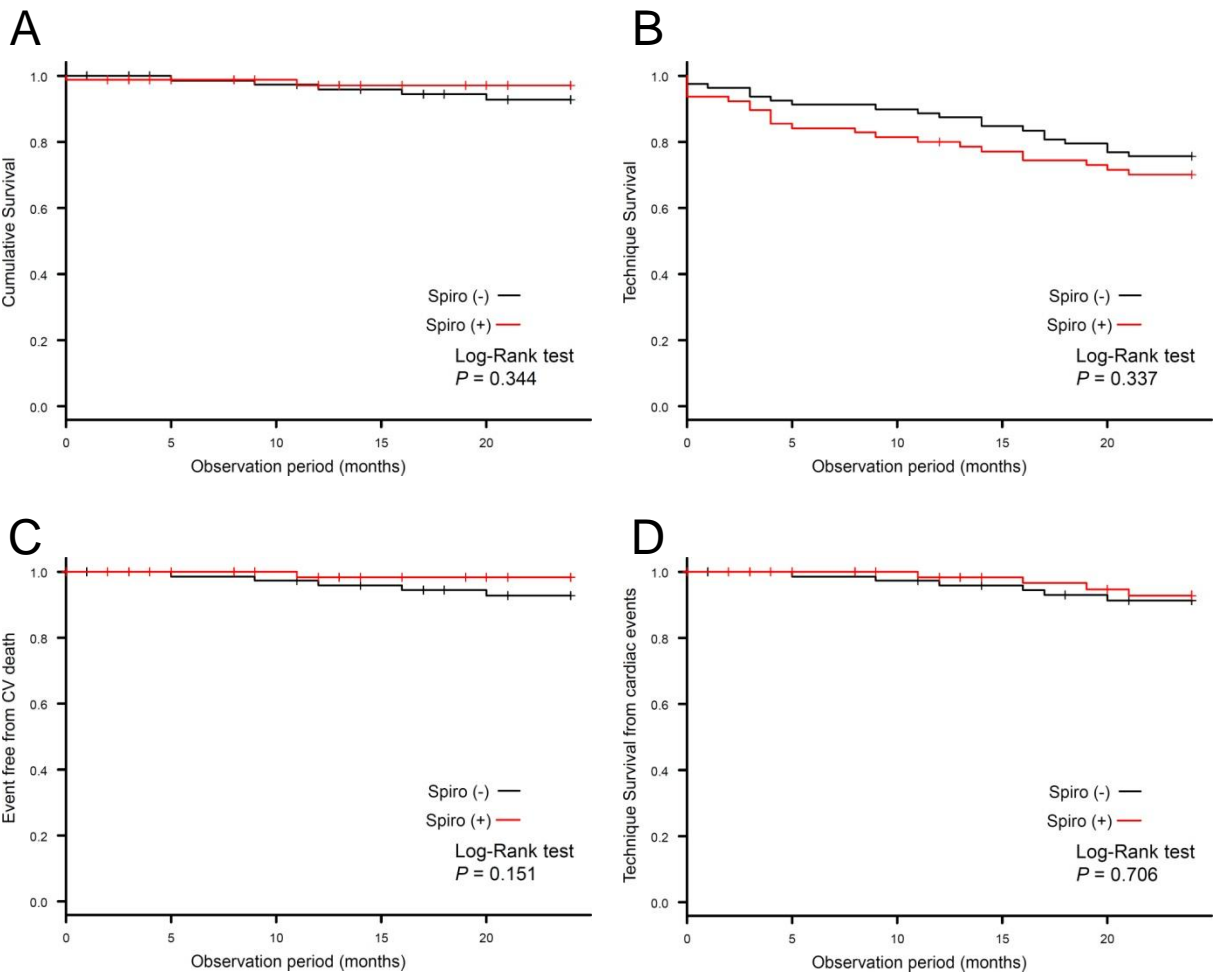


Supplementary Figure 2. Rate of Changes in Left ventricular mass index in females.

In females, rate of changes in left ventricular mass index (LVMI) did not significantly differ during observation period in both patients with $\text{LVMI} \leq 47 \text{ g/m}^2$ (normal range for females) (A) and those with $\text{LVMI} > 47 \text{ g/m}^2$ (left ventricular hypertrophy) (B) at baseline.

Spiro (-): control group; Spiro (+): spironolactone treatment group.

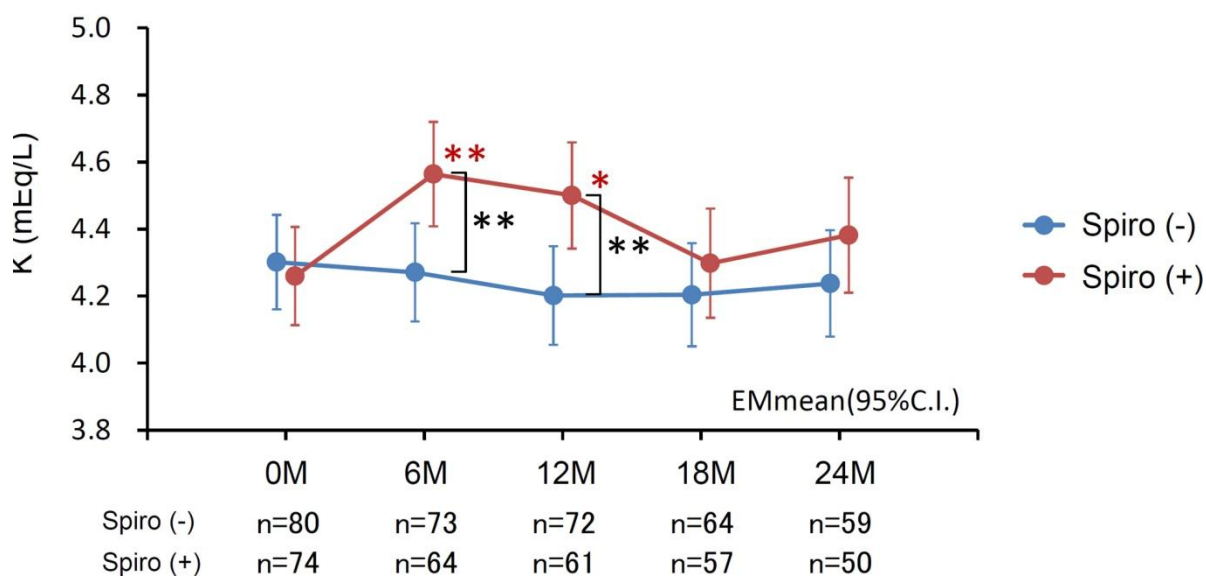
Supplementary Figure 2



(months)	0	6	12	18	24
	(number of patients)				
Spironolactone (-)	80	73	70	65	61
Spironolactone (+)	78	63	59	55	52

Supplementary Figure 3. Mortality and technical survival
Kaplan-Meier data for all-cause mortality (A), technical survival rates (B), cardio-vascular death (C) and technical survival for cardio-vascular causes (D)

Supplementary Figure 3



Supplementary Figure 4. Changes in potassium levels in spironolactone treatment and control groups during the observation period.

Spiro (-): control group; Spiro (+): spironolactone treatment group.

Supplementary Figure 4