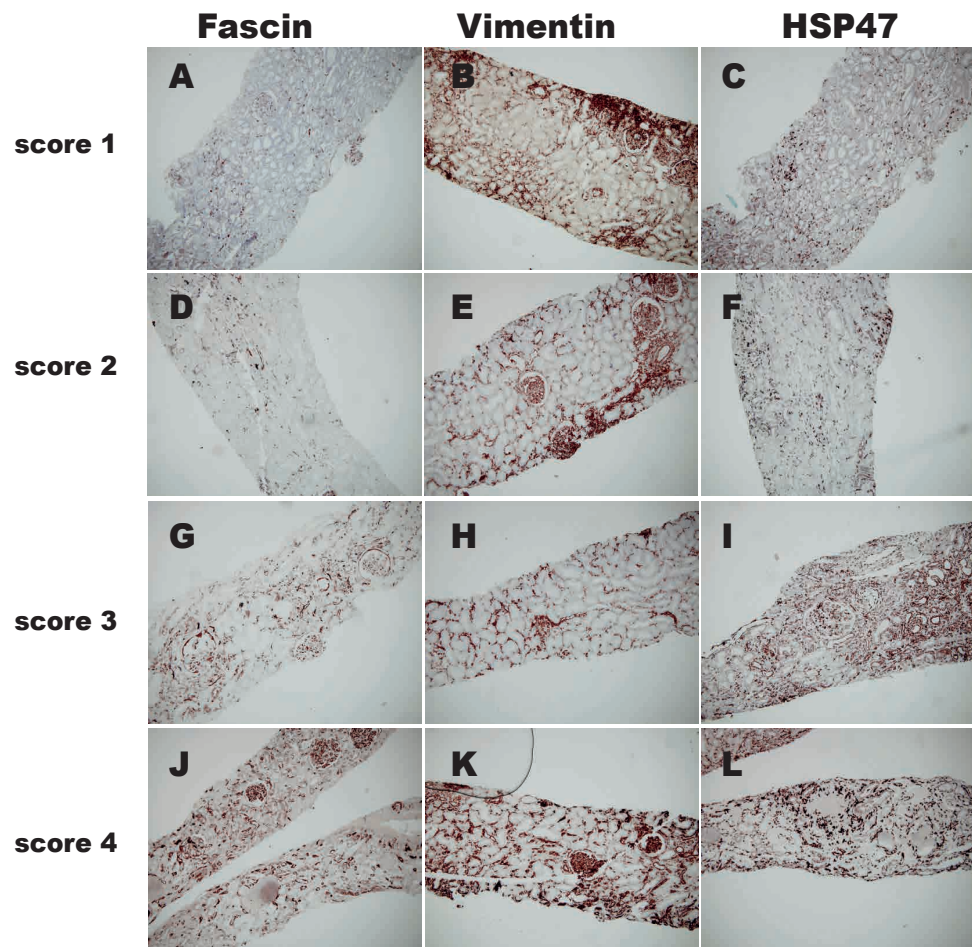


LEGENDS

Supplemental Figure 1, Semi-quantification scores (from 1 to 4) of 3 EndMT markers: fascin (A, D, G, J), vimentin (B, E, H, K) and hsp47 (C, F, I, L).

Supplemental Figure 2: Double staining of endothelial marker CD34 (in blue) with EndMT markers (in pink): fascin (B), hsp47 (C), vimentin (A, D) in a renal graft with ABMR (B, C, D) and in a control kidney (A). In a normal kidney, a blue staining (CD34) is detected in peritubular capillaries, but no endothelial expression of vimentin (A). In a graft with ABMR (B, C, D), the double staining of CD34 with EndMT markers is visible, as shown by the purple color in endothelial capillaries (arrows). Some capillaries without EndMT markers are only stained in blue (triangle).

Suppl Fig 1



Suppl Fig 2

