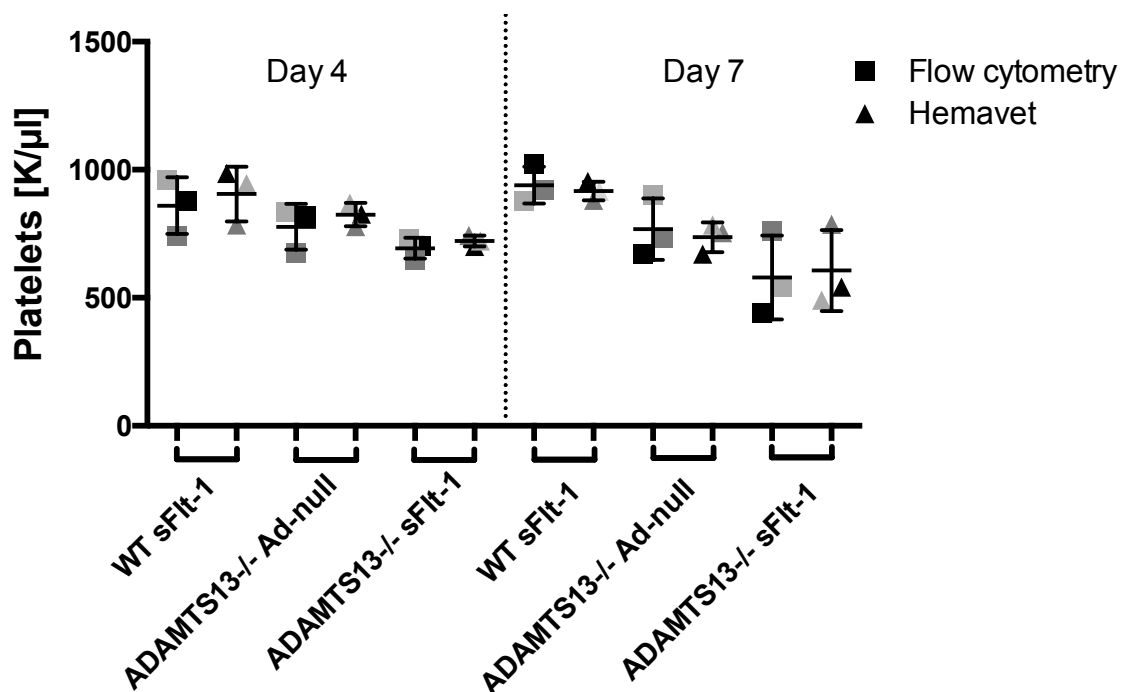


SUPPLEMENTARY INFORMATION

Supplementary Method:

Flow cytometry: Blood was collected using an EDTA-coated capillary from the retroorbital plexus. 10µl of full blood were diluted in 100µl PBS containing 0.1% sodium azide (Sigma) and 2% FCS. Platelets were labeled using APC-conjugated anti-GPIX antibody or corresponding isotype control (both BioLegend), according to standard protocols¹. Platelet counts were determined by flow cytometry (BD FACSCantoII) and analyzed using FlowJo software (TreeStar Inc., Version 8.8.7)

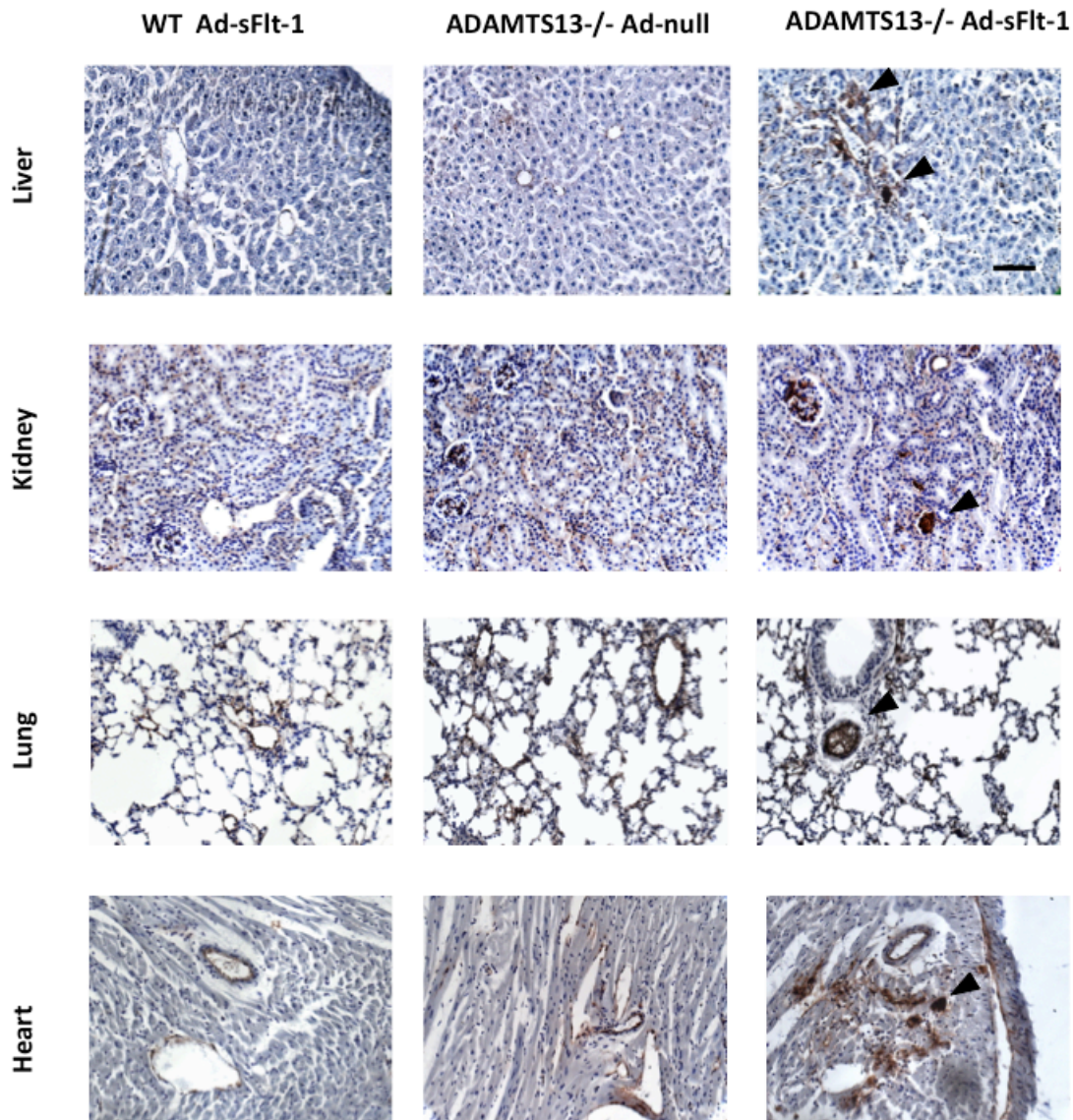
Supplementary Figure S1



Measurement of platelet counts by flow cytometry and hemavet shows very similar results. Platelet counts in WT and ADAMTS13-/- mice

that had been injected with Ad-sFlt-1 or Ad-null were measured at day 4 and day 7. Platelet counts from the same mouse were determined either by flow cytometry (squares) or by hemavet (triangles), corresponding measurements for one treatment group are indicated by brackets underneath the x-axis. Within one treatment group individual mice are color-coded; n = 3 for each treatment and time-point.

Supplementary Figure S2



VWF-rich thrombi in multiple organs after sFlt-1 overexpression in ADAMTS13^{-/-} mice (lower power images). Organs were collected from WT and ADAMTS13^{-/-} mice 7 days after injection of Ad-sFlt-1 or Ad-null. Representative photographs of immunohistochemical staining for VWF (brown) in liver, kidney, lung and heart sections are shown. Arrowheads indicate VWF-rich thrombi. Scale bar: 100 μ m.

Supplementary Table 1: Parameters determined in WT mice 7 days after injection of Ad-null virus

Parameter	Value	P value compared to untreated WT mice
Platelet number	776.75 ± 24.19 K/ μ l	0.659
Schistocytes	0.63 ± 0.15 %	0.45
Reticulocytes	2.37 ± 0.056 %	0.21
Hemoglobin	14.23 ± 0.45 g/dl	0.72
Albumin-creatinine Ratio	13.7 ± 5.7	0.36
Glomerular size	2.993 ± 149.28 μ m ²	Not determined in untreated WT mice
Open capillary space per glomerulus	23.9 ± 1.76 %	Not determined in untreated WT mice

Values are average ± SEM, n = 4 for the WT Ad-null mice.

References:

1. Nieswandt, B, Schulte, V, Bergmeier, W: Flow-cytometric analysis of mouse platelet function. *Methods Mol Biol*, 272: 255-268, 2004.