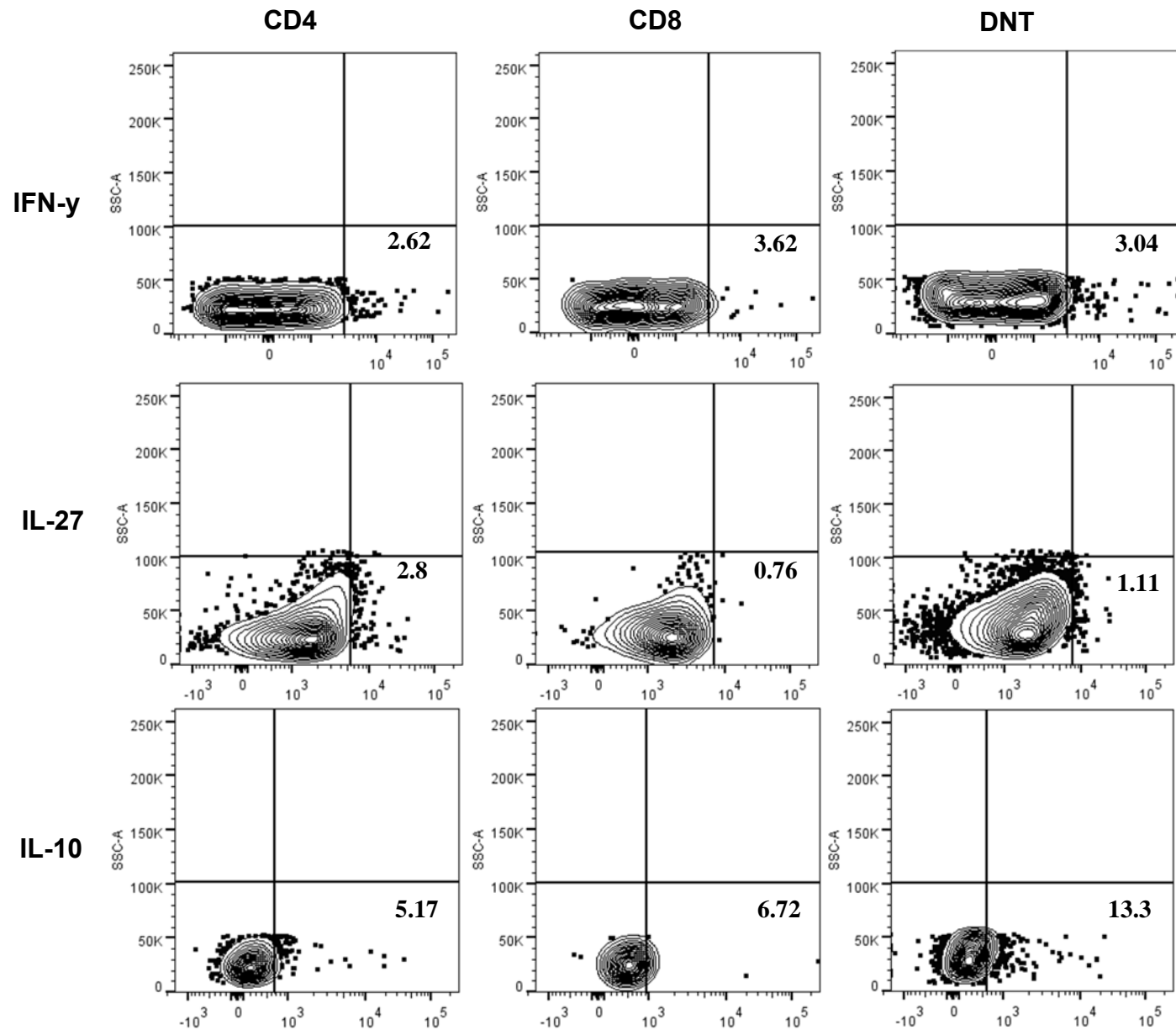
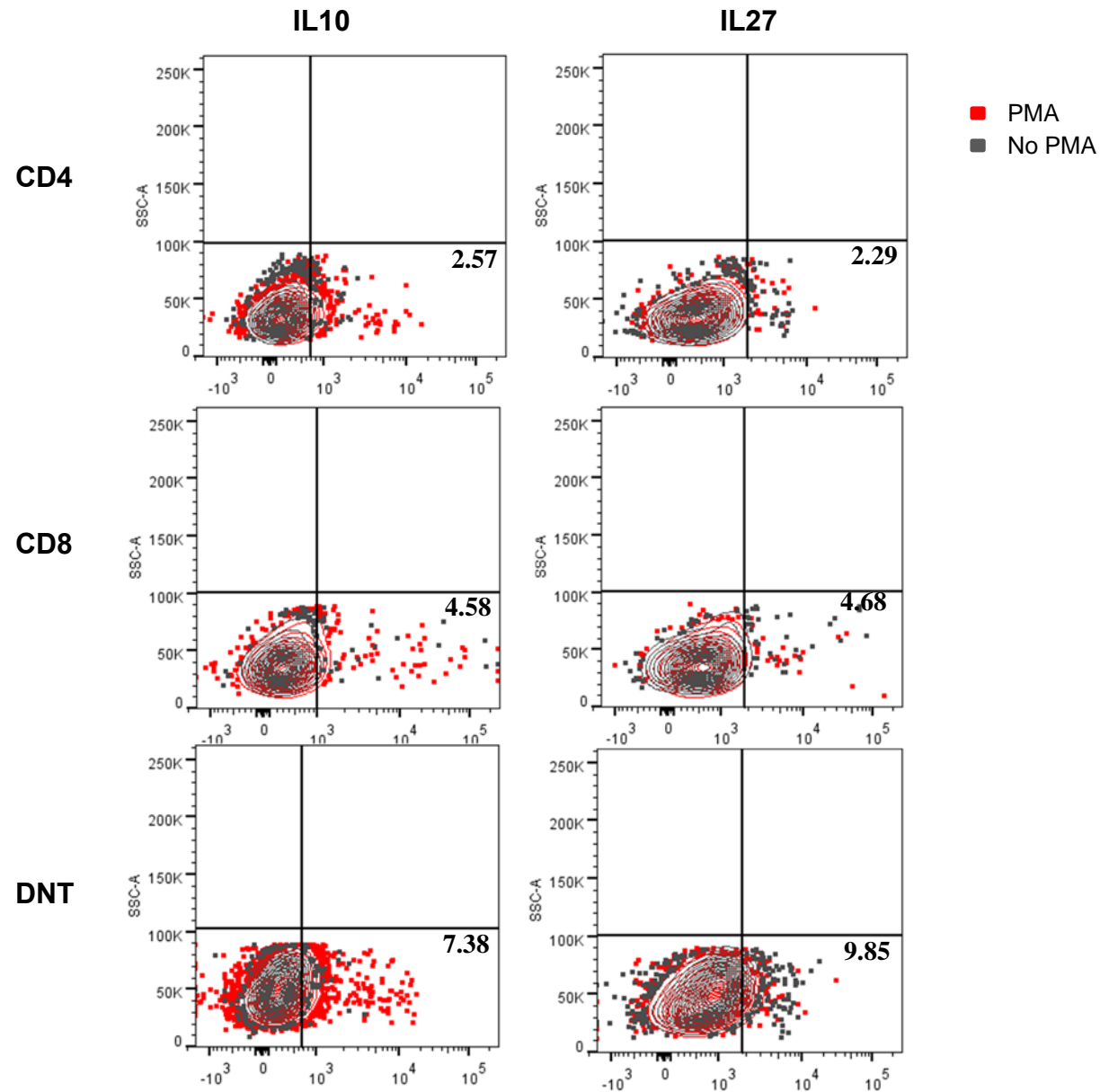


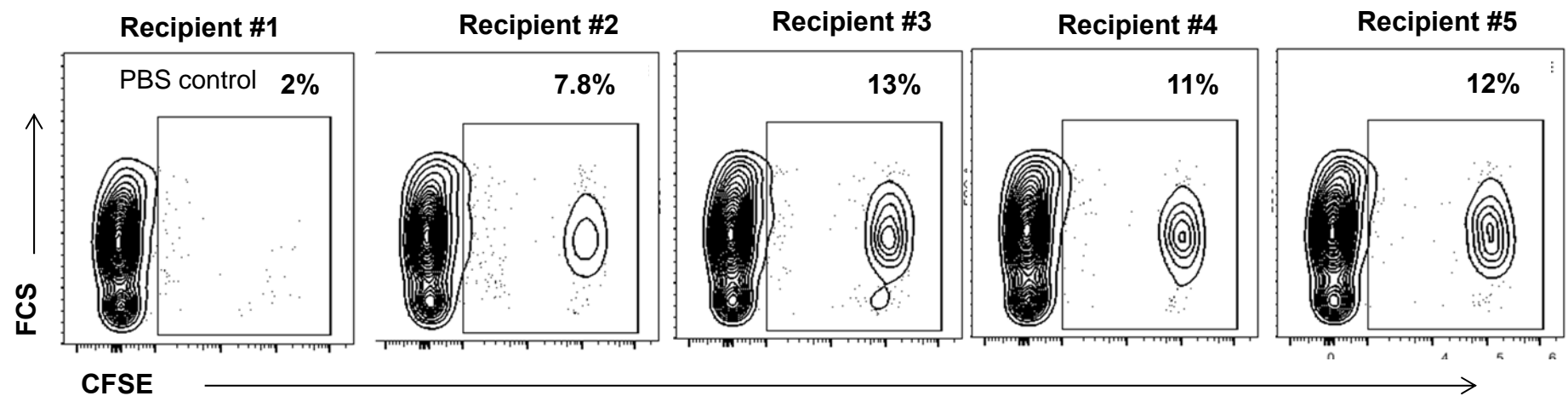
**Supplemental Figure 1: IL17A protein level using intracellular staining.** Kidney DN T cells show low expression of IL17A in the steady state.



**Supplemental Figure 2: Intracellular cytokines expression in post IR kidneys.** Representative FACS plots showing intracellular cytokines in CD4, CD8 and DN T cells isolated from post-ischemic kidneys.



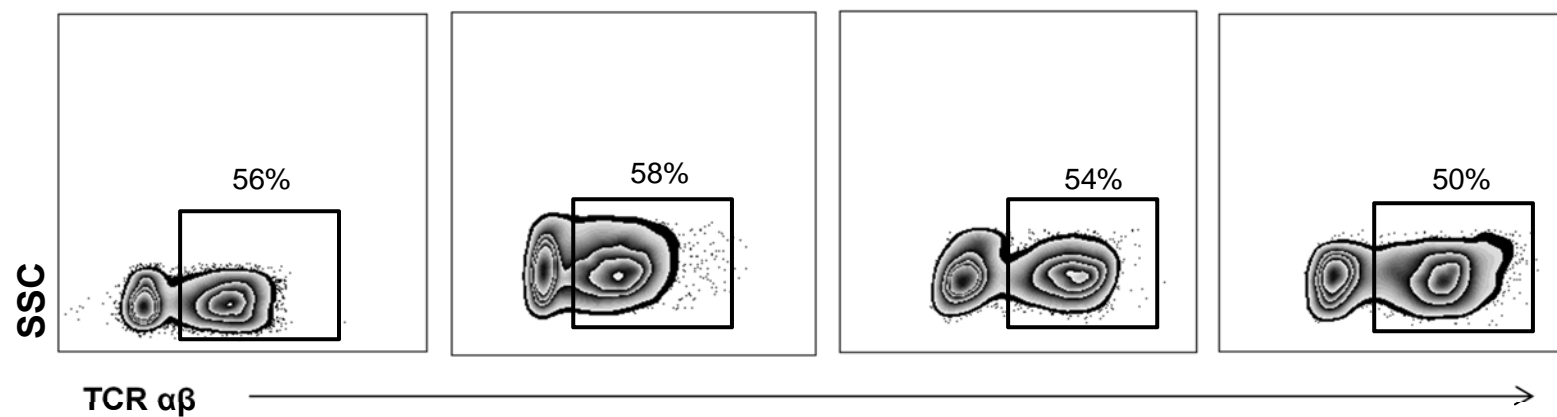
**Supplemental Figure 3: Effect of PMA treatment on intracellular cytokine levels.** Representative FACS plots showing overlaid panels to demonstrate the effect of PMA treatment on intracellular IL10 and IL27 expression in CD4, CD8 and DN T cells.



**Supplemental Figure 4: Homing of gld DN T cells into the kidney.** B6 mice (n= 5) were injected with CFSE-labeled gld DN T cells or PBS and analyzed 24 h later for presence of CFSE-labeled cells in kidney tissue. Each dot plot represents one recipient.

Case	% DN	% CD4	% CD8	% DP	Age	Gender	Diagnosis
1	18.3	25.8	50.9	5	63	M	HYBRID TUMOR (RCC + ONCOCYTOMA)
2	37.2	30.2	29	3.59	69	M	RCC (PAPILLARY)
3	31	27.7	35	6.3	56	F	RCC (CLEAR CELL TYPE )
4	61	15	17.7	6	68	M	RCC, CLEAR CELL TYPE

**Supplemental Figure 5: Demographics for human samples.** Table shows percentage of human kidney T cell subsets age, gender and diagnosis for each case.



**Supplemental Figure 6: TCR  $\alpha\beta$ <sup>+</sup> expression in human kidney T cells.** Plots show the expression level of TCR  $\alpha\beta$ <sup>+</sup> in lymphocytes from human kidney samples.