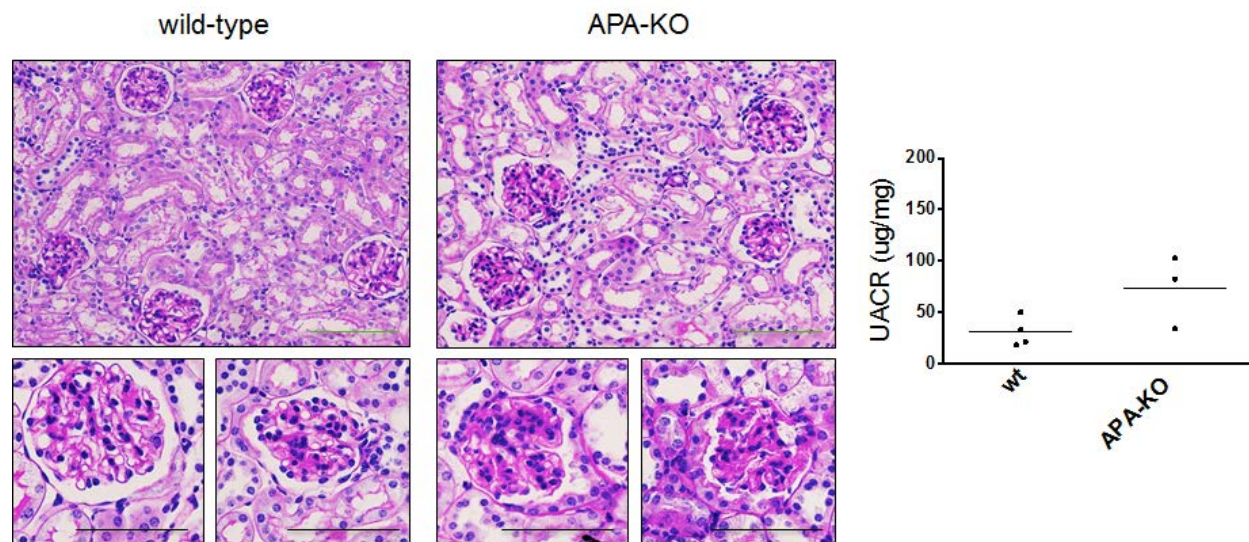
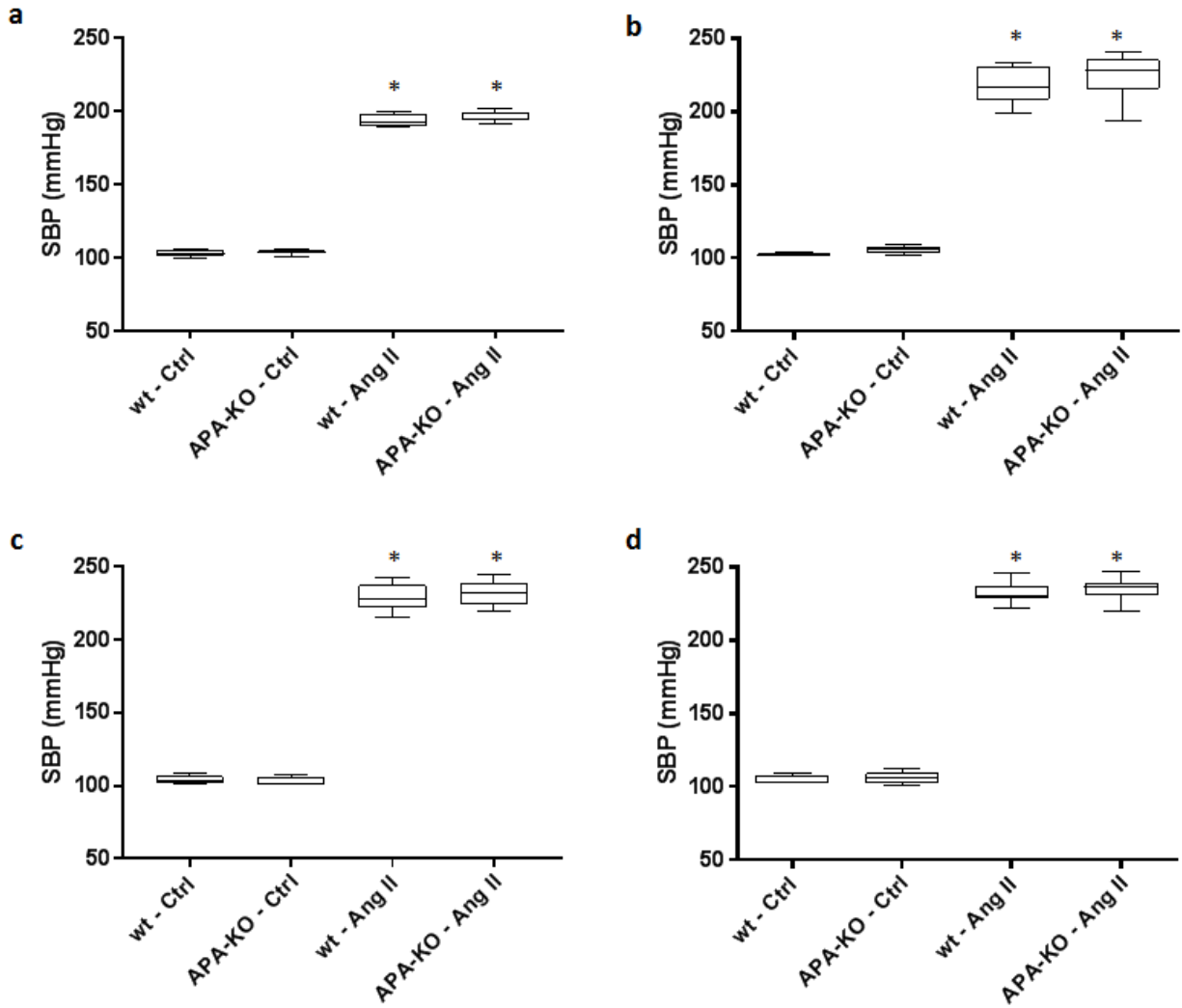


SUPPLEMENTAL DATA



Supplemental Figure S1. Kidney histology and albuminuria examined after aging APA-KO mice. Examination of kidney sections from 12 month-old wild-type and APA-KO mice stained with periodic acid-Schiff revealed absence of significant glomerular or tubulointerstitial injury, except for sporadic mesangial hypercellularity in APA-KO mouse kidneys. Scale bars: black = 200 μM ; green = 200 μM . No significant increase in urine albumin-to-creatinine ratio (UACR) was observed between groups, $P = 0.07$.



Supplemental Figure S2. Values of systolic blood pressure registered during a 4-week infusion of Ang II (400 ng/kg/min) in APA-KO mice. Tail-cuff systolic blood pressure readings in wild-type (wt) or APA-KO mice treated with chronic subcutaneous infusion of either vehicle control (Ctrl) or angiotensin II (Ang II) (400 ng/kg/min). Data presented in box whisker plots of values obtained at (a) 1 week, (b) 2 weeks, (c) 3 weeks and (d) 4 weeks shows large and comparable increases in SBP in wt and APA-KO mice treated with Ang II throughout the study period. * $P < 0.001$.