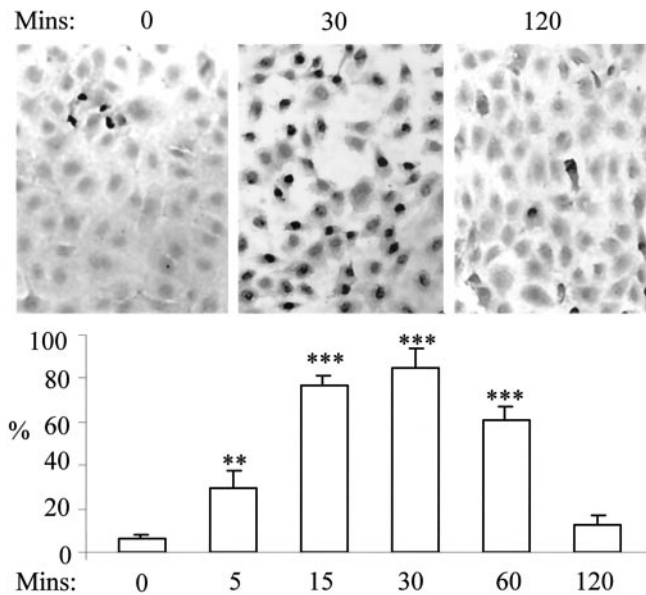


An incorrect figure was published in the June 2002 issue of *JASN* (Figure 1 in Li JH, Zhu HJ, Huang XR, Lai KN, Johnson RJ, Lan HY: Smad7 inhibits fibrotic effect of TGF- $\beta$  on renal tubular epithelial cells by blocking Smad2 activation. *J Am Soc Nephrol* 13: 1464–1472, 2002). The correct Figure 1 is printed below.

(A) TGF- $\beta$ 1-induced p-Smad 2 transnuclear location



(B) TGF- $\beta$ 1-induced Smad 2 phosphorylation

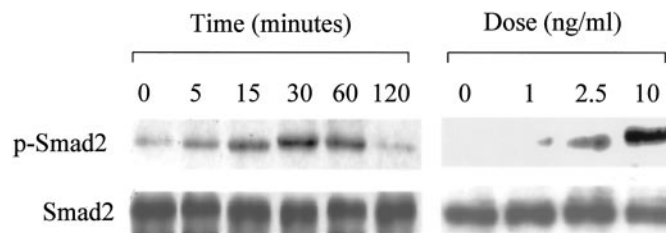


Figure 1. TGF- $\beta$ 1 induces Smad2 nuclear localization and phosphorylation. (A) Immunocytochemistry demonstrates that TGF- $\beta$ 1 (10 ng/ml) induces phosphorylated Smad2 (p-Smad2) nuclear localization (dark black nucleus) on tubular epithelial cells (TEC) in a time-dependent manner ( $\times 400$ ). Nucleus was counterstained with hematoxylin. Each bar represents mean  $\pm$  SD for groups of five experiments. (B) Western blot analyses reveal that TGF- $\beta$ 1 (10 ng/ml) induces p-Smad2 in both a time- and dose (30 min)-dependent manner. Data represent an example for four experiments. \*\* $P < 0.01$ , \*\*\* $P < 0.001$  compared with medium control (0).