

## Effect of Pioglitazone on Cardiovascular Outcome in Diabetes and Chronic Kidney Disease

Christian A. Schneider,\* Ele Ferrannini,<sup>†</sup> Ralph DeFronzo,<sup>‡</sup> Guntram Schernthaner,<sup>§</sup> John Yates,<sup>||</sup> and Erland Erdmann\*

\*Klinik III für Innere Medizin, University of Cologne, Cologne, Germany; <sup>†</sup>Department of Internal Medicine and CNR Institute of Clinical Physiology, University of Pisa, Pisa, Italy; <sup>‡</sup>Diabetes Division, University of Texas Health Science Center, San Antonio, Texas; <sup>§</sup>Department of Medicine I, Rudolfstiftung Hospital, Vienna, Austria; and <sup>||</sup>Takeda Global Research and Development Center, Inc., Deerfield, Illinois

### ABSTRACT

Patients with diabetes and chronic kidney disease (CKD) are at particularly high risk for cardiovascular disease (CVD). This *post hoc* analysis from the PROspective pioglitAzone Clinical Trial In macroVascular Events (PROactive) investigated the relationship between CKD and incident CVD in a population of patients with diabetes and documented macrovascular disease, as well as the effects of pioglitazone treatment on recurrent CVD. CKD, defined as an estimated GFR <60 ml/min per 1.73m<sup>2</sup>, was present in 597 (11.6%) of 5154 patients. More patients with CKD reached the primary composite end point (all-cause mortality, myocardial infarction (MI), stroke, acute coronary syndrome, coronary/carotid arterial intervention, leg revascularization, or amputation above the ankle) than patients without CKD (27.5 versus 19.6%; *P* < 0.0001). Patients with CKD were also more likely to reach a secondary composite end point (all-cause mortality, MI, and stroke). Patients who had CKD and were treated with pioglitazone were less likely to reach the secondary end point (hazard ratio 0.66; 95% confidence interval 0.45 to 0.98), but this association was not observed among those with better renal function. In addition, there was a greater decline in estimated GFR with pioglitazone (between-group difference 0.8 ml/min per 1.73 m<sup>2</sup>/yr) than with placebo. In conclusion, CKD is an independent risk factor for cardiovascular events and death among patients with diabetes and preexisting macrovascular disease. Patients who had CKD and were treated with pioglitazone were less likely to reach a composite end point of all-cause death, MI, and stroke, independent of the severity of renal impairment.

*J Am Soc Nephrol* 19: 182–187, 2008. doi: 10.1681/ASN.2007060678

Chronic kidney disease (CKD), commonly defined as GFR of <60 ml/min per 1.73 m<sup>2</sup>,<sup>1</sup> is associated with substantially increased risk for cardiovascular disease (CVD) morbidity and mortality, independent of traditional cardiovascular risk factors.<sup>2,3</sup> Using pooled data from population-based studies, the adjusted relative risk for cardiovascular outcomes and all-cause mortality increased by approximately 30% in patients with CKD compared with individuals with preserved renal function<sup>4</sup>; however, the impact of CKD on recurrent cardiovascular events among patients with diabetes and established macrovascular disease has not been studied previously, and there is a paucity of data on the impact of medical treatments on major out-

comes.<sup>5–7</sup> Because CKD, diabetes, and previous cardiovascular events all are independent cardiovascular risk factors, this population may be at especially high risk for subsequent cardiovascular events.

The PROspective pioglitAzone Clinical Trial In

Received June 18, 2007. Accepted August 27, 2007.

Published online ahead of print. Publication date available at [www.jasn.org](http://www.jasn.org).

**Correspondence:** Dr. Christian A. Schneider, Facharzt für Innere Medizin/Kardiologie Klinik III für Innere Medizin, Zimmer 0, C, 329 Universität zu Köln Kerpener Strasse 68, 50937 Köln, Germany. Phone: 0221-4786205; Fax: 0221-4783673; E-mail: christian.schneider@uk-koeln.de

Copyright © 2008 by the American Society of Nephrology

Table 1. Baseline characteristics<sup>a</sup>

Characteristic	GFR			
	<60 ml/min per 1.73 m <sup>2</sup> (n = 597)		≥60 ml/min per 1.73 m <sup>2</sup> (n = 4557)	
	Pioglitazone (n = 274)	Placebo (n = 323)	Pioglitazone (n = 2292)	Placebo (n = 2265)
Patient				
male (n [%]) <sup>b</sup>	163 (59.5)	181 (56.0)	1546 (67.5)	1516 (66.9)
white (n [%])	272 (99.3)	314 (97.2)	2255 (98.4)	2242 (99.0)
age (yr; mean ± SD) <sup>b</sup>	65.9 ± 6.0	65.2 ± 7.0	61.5 ± 7.6	61.1 ± 7.7
time since diagnosis of diabetes (yr; mean ± SD) <sup>b</sup>	11.2 ± 7.5	11.6 ± 8.2	9.2 ± 6.8	9.3 ± 6.9
BMI (kg/m <sup>2</sup> ; mean ± SD)	31.0 ± 4.8	31.2 ± 4.8	30.7 ± 4.7	31.0 ± 4.8
BP: mean systolic/diastolic (mmHg)	144.0/82.2	145.8/82.4	143.5/82.9	143.0/17.4
history of hypertension (n [%]) <sup>b</sup>	225 (82.1)	275 (85.1)	1692 (73.8)	1695 (74.8)
current smoker (n [%]) <sup>b</sup>	15 (5.8)	32 (9.9)	314 (13.7)	341 (15.1)
Blood glucose-lowering treatment (n [%])				
metformin only	24 (8.8)	23 (7.1)	226 (9.9)	234 (10.3)
sulfonylureas only	46 (16.8)	60 (18.6)	456 (19.9)	427 (18.9)
metformin + sulfonylurea	65 (23.7)	80 (24.8)	557 (25.2)	571 (25.2)
insulin + metformin	53 (19.3)	60 (18.6)	398 (17.4)	406 (17.9)
insulin + sulfonylurea	31 (11.3)	42 (13.0)	175 (7.6)	175 (7.7)
Laboratory data (mean ± SD)				
HbA <sub>1c</sub> (%)	8.2 ± 1.5	8.3 ± 1.5	8.0 ± 1.4	8.1 ± 1.4
LDL cholesterol (mmol/L)	3.0 ± 1.0	3.0 ± 1.1	3.0 ± 0.9	3.0 ± 1.0
HDL cholesterol (mmol/L)	1.1 ± 0.3	1.2 ± 0.3	1.2 ± 0.3	1.2 ± 0.3
triglycerides (mmol/L)	2.3 ± 1.6	2.5 ± 1.8	2.2 ± 1.9	2.2 ± 1.8
creatinine (μmol/L) <sup>b</sup>	122.6 ± 25.8	123.4 ± 38.8	77.4 ± 15.0	77.2 ± 14.8
GFR (ml/min per 1.73 m <sup>2</sup> ) <sup>b</sup>	50.1 ± 7.7	50.3 ± 8.8	89.3 ± 20.3	89.4 ± 19.1
Micral test result				
negative <sup>b</sup>	120 (43.8)	157 (48.6)	1266 (55.2)	1250 (55.2)
20 mg/L	48 (17.5)	58 (18.0)	487 (21.2)	484 (21.4)
50 mg/L	54 (19.7)	53 (16.4)	298 (13.0)	313 (13.8)
100 mg/L	45 (16.4)	45 (13.9)	185 (8.1)	170 (7.5)

<sup>a</sup>BMI, body mass index; HbA<sub>1c</sub>, glycosylated hemoglobin.

<sup>b</sup>P < 0.0001 for GFR <60 versus ≥60 ml/min per 1.73 m<sup>2</sup> (using a  $\chi^2$  test).

macroVascular Events (PROactive) was designed to compare the effects of the thiazolidinedione pioglitazone with placebo on cardiovascular outcomes in a large cohort of patients with diabetes and a history of macrovascular disease.<sup>8</sup> In this high-risk population with diabetes, pioglitazone treatment reduced the combined main secondary end point of all-cause mortality, myocardial infarction (MI; excluding silent MI), and stroke by 16% ( $P = 0.027$ ) and the primary composite end point (which also included procedural end points, *e.g.*, leg revascularization) by 10% ( $P = 0.095$ ).<sup>9</sup> In this report, we analyzed the influence of CKD on the rates of the primary and the principal secondary end points from PROactive. We also compared the effect of pioglitazone *versus* placebo on recurrent cardiovascular events in this population of PROactive patients with CKD at baseline.

## RESULTS

GFR data were available for 5154 (98.4%) patients. At baseline, evidence of CKD (GFR <60 ml/min per 1.73 m<sup>2</sup>) was present

in 597 (11.6%) of the 5154 patients. Baseline characteristics of the PROactive population stratified by GFR ≥60 *versus* GFR <60 ml/min per 1.73 m<sup>2</sup> are shown in Table 1. Patients with CKD were older, had longer duration of diabetes, and had a higher prevalence of hypertension. There were no differences between treatment groups in baseline characteristics in patients with GFR either ≥60 or <60 ml/min per 1.73 m<sup>2</sup> (Table 1).

The incidence of the primary composite end point was 27.5% in patients with CKD compared with 19.6% in patients with GFR ≥60 ml/min per 1.73 m<sup>2</sup> (hazard ratio [HR] 1.51; 95% confidence interval [CI] 1.28 to 1.78;  $P < 0.0001$ ). The incidence of the principal secondary end point was 18.3% in patients with CKD compared with 11.5% in patients with GFR ≥60 ml/min per 1.73 m<sup>2</sup> (HR 1.65; 95% CI 1.35 to 2.03;  $P < 0.0001$ ). Similarly, a higher proportion of patients with a GFR <60 ml/min per 1.73 m<sup>2</sup> died from any cause ( $n = 65$ ; 10.9%) than those with a GFR ≥60 ml/min per 1.73 m<sup>2</sup> ( $n = 267$ ; 5.9%; HR 1.86; 95% CI 1.42 to 2.43). Multivariate analysis showed that the presence of CKD was an independent risk factor for the primary composite end point (Table 2). Both

**Table 2.** Multivariate analysis for the primary composite end point (including GFR;  $n = 4975$ )

Parameter	HR (95% CI)	P
Duration 5 to 10 yr (versus <5 yr)	0.92 (0.769 to 1.094)	0.3382
BMI (kg/m <sup>2</sup> )	0.98 (0.968 to 0.996)	0.0127
Triglycerides 1.7 to 2.2 mmol/l (versus <1.7 mmol/L)	1.00 (0.844 to 1.183)	0.9907
Age (yr)	1.03 (1.017 to 1.036)	<0.0001
Triglycerides >2.2 mmol/l (versus <1.7 mmol/l)	1.16 (1.004 to 1.332)	0.0438
Positive Micral test	1.16 (1.024 to 1.312)	0.0191
Duration ≥10 yr (versus <5 yr)	1.20 (1.031 to 1.404)	0.0188
LDL cholesterol 3 to 4 mmol/L (versus <3 mmol/L)	1.22 (1.060 to 1.397)	0.0053
Diuretic use	1.24 (1.083 to 1.416)	0.0018
Past smoker (versus never)	1.25 (1.089 to 1.435)	0.0015
CKD (GFR<60 ml/min per 1.73 m <sup>2</sup> )	1.25 (1.048 to 1.490)	0.0130
Previous stroke	1.26 (1.074 to 1.486)	0.0048
LDL cholesterol >4 mmol/L (versus <3 mmol/L)	1.27 (1.060 to 1.517)	0.0096
HbA <sub>1c</sub> ≥7.5%	1.32 (1.157 to 1.515)	<0.0001
Previous MI	1.40 (1.222 to 1.606)	<0.0001
Current smoker (versus never)	1.49 (1.230 to 1.804)	<0.0001
Peripheral arterial obstructive disease	1.49 (1.275 to 1.737)	<0.0001

serum creatinine and GFR were significant in the absence of the other.

In patients with CKD, the incidence of the primary end point was 23.7% in the pioglitazone-treated group and 30.7% in the placebo group (HR 0.75; 95% CI 0.55 to 1.03; Figure 1). Similarly, the incidence of the principal secondary end point was lower in the pioglitazone-treated group (14.6%) compared with the placebo group (21.4%; HR 0.66; 95% CI 0.45, 0.98; Figure 1). All-cause mortality rates were 7.7% ( $n = 21$ ) in the pioglitazone group and 13.6% ( $n = 44$ ) in the placebo group (HR 0.75; 95% CI 0.55 to 1.03).

In patients with a GFR ≥60 ml/min per 1.73 m<sup>2</sup>, the incidence of the primary end point was 19.0% with pioglitazone and 20.2% with placebo (HR 0.94; 95% CI 0.83 to 1.07). Similar results were seen for the principal secondary end point (10.9% with pioglitazone and 12.2% with placebo; HR 0.89; 95% CI 0.75 to 1.05). The proportion of patients who had a GFR ≥60 ml/min per 1.73 m<sup>2</sup> and subsequently died from any cause was also similar between groups ( $n = 137$  [6.0%] with pioglitazone versus  $n = 130$  [5.7%] with placebo; HR 1.09; 95% CI 0.87 to 1.38). The interaction between baseline renal function and effect of pioglitazone did not reach statistical significance ( $P = 0.1923$  for the primary end point and  $P = 0.1781$  for the principal secondary end point), indicating that the effect of pioglitazone relative to placebo was similar regardless of GFR.

The proportion of patients with a negative Micral test was higher in patients without than with CKD and was slightly lower at final visit than at baseline in both patients with (47.8% at baseline; 42.8% at final visit) and patients without CKD (56.5% at baseline; 54.9% at final visit) at baseline. Multivariate analysis showed that a positive Micral test at baseline was an independent risk factor for the primary composite end point and remained significant when GFR was included in the model (Table 2).

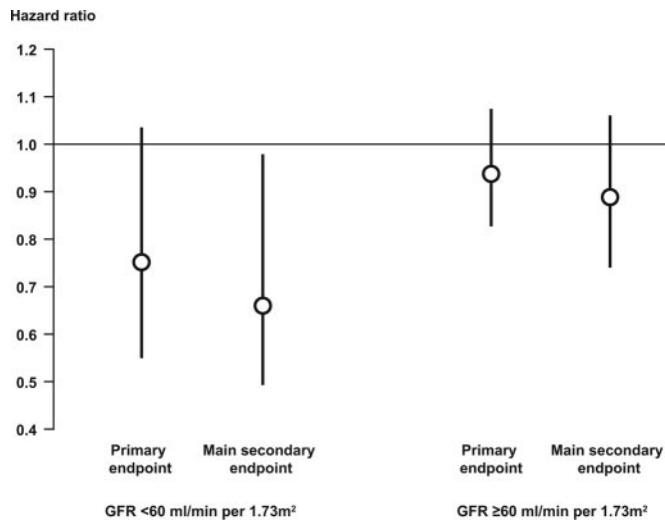
During the mean treatment period of 3 yr, GFR declined by

5.4 and 2.7 ml/min per 1.73 m<sup>2</sup> in the pioglitazone and placebo groups, respectively ( $P < 0.0001$ ). In the patients who had a GFR ≥60 ml/min per 1.73 m<sup>2</sup> at baseline, 467 (20.4%) in the pioglitazone group and 370 (16.3%) in the placebo group developed CKD during the study ( $P = 0.0004$ ). The decreases in BP in the patients with GFR ≥60 ml/min per 1.73 m<sup>2</sup> at baseline (−4.3 mmHg in systolic and −3.5 mmHg in diastolic BP with pioglitazone versus −2.5 mmHg and −2.9 mmHg, respectively, in the placebo group) were similar to those observed in the total PROactive population. In the group of patients with CKD at baseline, BP decreased to a similar extent in both treatment groups (−3.0 mmHg in systolic and −3.2 mmHg in diastolic BP with pioglitazone versus −3.4 mmHg and −2.9 mmHg, respectively, in the placebo group). There were no significant differences in the changes of concomitant treatment between the GFR groups (data not shown).

## DISCUSSION

Several recent publications have documented that patients with diminished GFR are at high risk for cardiovascular morbidity and mortality.<sup>2,3</sup> In this study, we examined the role of baseline renal function in patients with type 2 diabetes and existing macrovascular disease and recurrent cardiovascular events. Our results demonstrate that CKD, as defined by a GFR of <60 ml/min per 1.73 m<sup>2</sup>, is an independent risk factor for major adverse cardiovascular events and death in this high-risk population.

Several potential mechanisms may explain this increased cardiovascular risk in patients with CKD and diabetes. First, CKD often coexists with other cardiovascular risk factors, including dyslipidemia, hypertension, and smoking.<sup>10–13</sup> Second, impaired kidney function is associated with elevated markers of inflammation and other putative risk factors for cardiovascular events,<sup>14–18</sup> which contribute to adverse cardio-



**Figure 1.** HR (95% CI) for the effect of pioglitazone versus placebo treatment on the primary and the principal secondary end points in patients with and without CKD.

vascular outcomes. Last, patients with renal disease are less likely to receive proven efficacious therapies to prevent CVD.<sup>19–22</sup>

In the recently published *post hoc* analysis of Antihypertensive and Lipid-Lowering Treatment to Prevent Heart Attack Trial (ALLHAT), a GFR <60 ml/min per 1.73 m<sup>2</sup> was associated with an increased incidence for CVD (HR 1.41) in the subgroup of patients with type 2 diabetes.<sup>23</sup> Our analysis supports the concept that patients with type 2 diabetes and CKD are at increased risk for recurrent cardiovascular events (HR 1.51 for the primary end point and 1.65 for the principal secondary end point) and highlights the need for intensive therapy in these patients.<sup>24</sup>

Pioglitazone was more effective than placebo in reducing the rate of both the primary and secondary composite end points in the patients with CKD. There was a nonsignificant 25% risk reduction for pioglitazone relative to placebo for the primary end point (95% CI 0.55 to 1.03) and a significant 34% relative risk reduction for the secondary end point (95% CI 0.45 to 0.98). Likewise, event rates were lowered to a greater degree by pioglitazone relative to placebo among the patients without CKD at baseline, but the difference between treatment groups was not statistically significant. Thus, the effect of pioglitazone relative to placebo seems to be the same regardless of GFR.

The yearly declines in GFR (0.9 ml/min per 1.73 m<sup>2</sup> with placebo and 1.8 ml/min per 1.73 m<sup>2</sup> with pioglitazone) in our study is considerably lower than the decline of 3 to 4 ml/min per 1.73 m<sup>2</sup> observed in patients with diabetes in previous studies<sup>25,26</sup> and is more in the range of the GFR decrease found in an aging healthy population (1 ml/min per 1.73 m<sup>2</sup>/yr).<sup>27</sup> This smaller decrease might be explained by the strict treatment algorithm for hyperglycemia and hypertension used in PROactive. The clinical significance of the small difference in

GFR decline of 0.8 ml/min per 1.73 m<sup>2</sup>/yr between placebo and pioglitazone is uncertain considering the suboptimal precision in monitoring the GFR changes using the Modification of Diet in Renal Disease (MDRD) method.<sup>28,29</sup> Despite this small change in GFR, our data indicate that treatment with pioglitazone will be of considerable benefit to patients with diabetes and CKD.

A detailed analysis of reported adverse events was not conducted; however, the most critical events, such as cardiovascular events and death, were included in the efficacy parameters. This gives reassurance on the safety profile of pioglitazone in patients with reduced kidney function.

This analysis of PROactive has several limitations. Although the data for this analysis were collected prospectively, the analysis for the presence of CKD was defined and performed retrospectively and treatment randomization was not stratified by CKD. Because this could affect the reliability of the prognostic data, the conclusions about the beneficial effects of pioglitazone in patients with CKD must be viewed with caution until confirmatory data of our findings are provided. It should be emphasized that the participants in PROactive were selected because of their high cardiovascular risk; therefore, caution also should be exercised when extrapolating the estimates of cardiovascular event rates in patients with CKD to those who are at lower cardiovascular risk. Nevertheless, our data suggest strongly that patients with diabetes and high risk identified by CKD can be treated effectively with pioglitazone.

In this retrospective analysis of patients with type 2 diabetes and preexisting macrovascular disease in PROactive, we have shown that CKD identifies a subpopulation of patients who are at even higher risk for CVD and that pioglitazone reduces major cardiovascular end points in these patients.

## CONCISE METHODS

### Patients

The PROactive protocol has been described in detail elsewhere.<sup>8,9</sup> Briefly, 5238 patients who had type 2 diabetes, were aged 35 to 75 yr, and had documented evidence of macrovascular disease and a glycosylated hemoglobin concentration higher than the local laboratory equivalent of 6.5% for a Diabetes Control and Complications Trial (DCCT)-traceable assay, despite existing treatment with diet alone or with oral glucose-lowering agents with or without insulin, were recruited. Patients were excluded when they had type 1 diabetes; were taking only insulin; had planned coronary or peripheral revascularization; had New York Heart Association class II or greater heart failure, ischemic ulcers, gangrene, or leg rest pain; were on hemodialysis on recruitment; or had an alanine aminotransferase >2.5 times the upper limit of normal.

All patients provided written informed consent. The study protocol was approved by local and national ethics committees and regulatory agencies and was conducted in accordance with the Declaration of Helsinki and Good Clinical Practice guidelines.

## Procedures

Patients were randomly assigned to receive pioglitazone ( $n = 2605$ ) or matching placebo ( $n = 2633$ ) in addition to their existing guideline-directed glucose-lowering and cardiovascular medications. Pioglitazone was administered as 15 mg/d for the first month, 30 mg/d for the second month, and 45 mg/d thereafter to achieve the maximum tolerated dosage. All patients were followed until the end of the study even when they permanently ceased study medication before the study end. Before the start of therapy, serum creatinine was determined in a central laboratory using the automated Hitachi (Tokyo, Japan) with Roche reagents (Roche Diagnostics, Mannheim, Germany) and standards and controls as recommended by the manufacturer. The central laboratory was certified by a national quality-control program. Urinary albumin concentration was measured locally at the beginning and at the end of the study using the Micral Test strip (Roche Diagnostics, Mannheim, Germany). Blood samples were taken for creatinine determination to examine the natural history of renal disease. GFR was estimated using the simplified MDRD formula:  $186.2 \times \text{serum creatinine in mg/dl}^{-1.154} \times \text{age in yr}^{-0.203} \times 1.212 \text{ if black} \times 0.742 \text{ if female}$ .<sup>1</sup> Patients with a GFR  $<60$  ml/min per  $1.73 \text{ m}^2$  were defined as having renal dysfunction (CKD; National Kidney Foundation definition) at baseline. Treatment randomization was not stratified by CKD.

The primary end point in PROactive was time from randomization to the composite end point of all-cause mortality, nonfatal MI (including silent MI), stroke, acute coronary syndrome, coronary/carotid arterial intervention, leg revascularization, or amputation above the ankle. The prespecified principal secondary end point in PROactive was time to the first event of all-cause mortality, MI (excluding silent MI), and stroke, because these represent “hard” end points of greatest concern to patients. Nottingham Clinical Research Group (Nottingham, UK) acted as the coordinating center, providing project management, data management, central randomization services, and statistical analysis. ICON Clinical Research (Southampton, UK) managed and monitored the sites and carried out central laboratory measurements.

## Statistical Analyses

Statistical methods used for the sample size calculation and end point analysis for PROactive have been reported previously.<sup>9</sup> The data presented here are from the intention-to-treat population. Group comparison was carried out by Mann-Whitney or  $\chi^2$  testing, for continuous variables and proportion, respectively. Time-to-event analyses were performed by fitting a Cox proportional hazards survival model with either treatment or baseline CKD as a covariate. The interaction between CKD and treatment on event rates was tested in a similar model containing both covariates. Multivariate Cox models were used to identify baseline factors prognostic of outcome; variable selection was carried out using a stepwise selection algorithm at a significance level of 0.05.

## ACKNOWLEDGMENTS

The study was funded by Takeda Pharmaceutical Company and was designed by the International Steering Committee, who approved the

protocol and amendments. Data analysis for this report was conducted by Nottingham Clinical Research Limited. Access to data was given freely to the Executive Committee and authors, and the sponsors have not suppressed any data. Data interpretation, writing of this report, and decision to publish were made by all of the authors. All authors have read and approved the final submitted version of the manuscript.

These data were presented as poster presentations at the annual meeting of the American Diabetes Association; June 23, 2007; Chicago, IL.

## DISCLOSURES

C.A.S. has received research grants or honoraria for educational presentations from Bayer, Merck Darmstadt, Roche Diagnostics, and Takeda; E.F. serves on the Advisory Board of Servier, AstraZeneca, Boehringer Ingelheim, GSK, MSD, Novartis, BMS, Roche, and Takeda; R.D. has received research grants from BMS, Amylin, Eli Lilly, Novartis, Pfizer, and Takeda and is on the Speakers' Bureau for Amylin and Takeda; G.S. is on the board of directors of sanofi aventis, Servier, Astra Zeneca, and Merck and has received honoraria for speaking engagements from sanofi aventis, Takeda, GSK, Novo Nordisk, Eli Lilly, and Bayer; J.Y. was previously employed by Takeda Global Research and Development Center; E.E. is the current chair of the PROactive Executive Committee and has received research grants, as well as honoraria for educational presentations, from Bayer (Germany), Takeda Global Research & Development Center, MSD, and Pfizer.

## REFERENCES

1. Levey AS, Coresh J, Balk E, Kausz AT, Levin A, Steffes MW, Hogg RJ, Perrone RD, Lau J, Eknoyan G: National Kidney Foundation practice guidelines for chronic kidney disease: Evaluation, classification, and stratification. *Ann Intern Med* 139: 137–147, 2003
2. Go AS, Chertow GM, Fan D, McCulloch CE, Hsu CY: Chronic kidney disease and the risks of death, cardiovascular events, and hospitalization. *N Engl J Med* 351: 1296–1305, 2004
3. Wu AY, Kong NC, de Leon FA, Pan CY, Tai TY, Yeung VT, Yoo SJ, Rouillon A, Weir MR: An alarmingly high prevalence of diabetic nephropathy in Asian type 2 diabetic patients: The MicroAlbuminuria Prevalence (MAP) study. *Diabetologia* 48: 17–26, 2005
4. Shlipak MG, Smith GL, Rathore SS, Massie BM, Krumholz HM: Renal function, digoxin therapy, and heart failure outcomes: Evidence from the digoxin intervention group trial. *J Am Soc Nephrol* 15: 2195–2203, 2004
5. Shlipak MG, Simon JA, Grady D, Lin F, Wenger NK, Furberg CD, the Heart and Estrogen/Progestin Replacement Study (HERS) Investigators: Renal insufficiency and cardiovascular events in postmenopausal women with coronary heart disease. *J Am Coll Cardiol* 38: 705–711, 2001
6. Foley RN, Parfrey PS, Sarnak MJ: Clinical epidemiology of cardiovascular disease in chronic renal disease. *Am J Kidney Dis* 32[Suppl 3]: S112–S119, 1998
7. Ruilope L, Antonio S, Jamerson K, Hansson L, Warnold I, Wedel H, Zanchetti A: Renal function and intensive lowering of blood pressure in hypertensive participants of the hypertension optimal treatment (HOT) Study. *J Am Soc Nephrol* 12: 218–225, 2001
8. Charbonnel B, Dormandy J, Erdmann E, Massi-Benedetti M, Skene A, PROactive Study Group: The Prospective Pioglitazone Clinical Trial in Macrovascular Events (PROactive): Can pioglitazone reduce cardiovascular events in diabetes? Study design and baseline characteristics

- of 5238 patients. *Diabetes Care* 27: 1647–1653, 2004
9. Dormandy JA, Charbonnel B, Eckland DJ, Erdmann E, Massi-Benedetti M, Moules IK, Skene AM, Tan MH, Lefebvre PJ, Murray GD, Standl E, Wilcox RG, Wilhelmsen L, Betteridge J, Birkeland K, Golay A, Heine RJ, Koranyi L, Laakso M, Mokan M, Norkus A, Pirags V, Podar T, Scheen A, Scherbaum W, Scherthaner G, Schmitz O, Skrha J, Smith U, Taton J, PROactive investigators: Secondary prevention of macrovascular events in patients with type 2 diabetes in the PROactive Study (PROspective pioglitAzone Clinical Trial In macroVascular Events): A randomised controlled trial. *Lancet* 366: 1279–1289, 2005
  10. Kasiske BL: The kidney in cardiovascular disease. *Ann Intern Med* 134: 707–709, 2001
  11. Shlipak MG, Fried LF, Cushman M, Manolio TA, Peterson D, Stehman-Breen C, Bleyer A, Newman A, Siscovick D, Psaty B: Cardiovascular mortality risk in chronic kidney disease: Comparison of traditional and novel risk factors. *JAMA* 293: 1737–1745, 2005
  12. Hakim RM, Lazarus JM: Progression of chronic renal failure. *Am J Kidney Dis* 14: 396–401, 1989
  13. Hunsicker LG, Adler S, Caggiula A, England BK, Greene T, Kusek JW, Rogers NL, Teschan PE: Predictors of the progression of renal disease in the Modification of Diet in Renal Disease Study. *Kidney Int* 51: 1908–1919, 1997
  14. Garg AX, Blake PG, Clark WF, Clase CM, Haynes RB, Moist LM: Association between renal insufficiency and malnutrition in older adults: Results from the NHANES III. *Kidney Int* 60: 1867–1874, 2001
  15. Stenvinkel P, Wanner C, Metzger T, Heimbürger O, Mallamaci F, Tripepi G, Malatino L, Zoccali C: Inflammation and outcome in end-stage renal failure: Does female gender constitute a survival advantage? *Kidney Int* 62: 1791–1798, 2002
  16. Stuveling EM, Hillege HL, Bakker SJ, Asselbergs FW, de Jong PE, Gans RO, de Zeeuw D, PREVEND study group: C-reactive protein and microalbuminuria differ in their associations with various domains of vascular disease. *Atherosclerosis* 172: 107–114, 2004
  17. Knight EL, Rimm EB, Pai JK, Rexrode KM, Cannuscio CC, Manson JE, Stampfer MJ, Curhan GC: Kidney dysfunction, inflammation, and coronary events: A prospective study. *J Am Soc Nephrol* 15: 1897–1903, 2004
  18. Clausen P, Jensen JS, Jensen G, Borch-Johnsen K, Feldt-Rasmussen B: Elevated urinary albumin excretion is associated with impaired arterial dilatory capacity in clinically healthy subjects. *Circulation* 103: 1869–1874, 2001
  19. McClellan W, Flanders W, Langston R, Jurkovic C, Presley R: Anemia and renal insufficiency are independent risk factors for death among patients with congestive heart failure admitted to community hospitals: A population-based study. *J Am Soc Nephrol* 13: 1928–1936, 2002
  20. McCullough PA, Sandberg KR, Borzak S, Hudson MP, Garg M, Manley HJ: Benefits of aspirin and beta-blockade after myocardial infarction in patients with chronic kidney disease. *Am Heart J* 144: 226–232, 2002
  21. Shlipak MG, Heidenreich PA, Noguchi H, Chertow GM, Browner WS, McClellan MB: Association of renal insufficiency with treatment and outcomes after myocardial infarction in elderly patients. *Ann Intern Med* 137: 555–562, 2002
  22. Tonelli M, Keech A, Shepherd J, Sacks F, Tonkin A, Packard C, Pfeffer M, Simes J, Isles C, Furberg C, West M, Craven T, Curhan G: Effect of pravastatin in people with diabetes and chronic kidney disease. *J Am Soc Nephrol* 16: 3748–3754, 2005
  23. Rahman M, Pressel S, Davis BR, Nwachuku C, Wright JT Jr, Whelton PK, Barzilay J, Batuman V, Eckfeldt JH, Farber MA, Franklin S, Henriquez M, Kopyt N, Louis GT, Saklayen M, Stanford C, Walworth C, Ward H, Weigmann T, for the ALLHAT Collaborative Research: Cardiovascular outcomes in high-risk hypertensive patients stratified by baseline glomerular filtration rate. *Ann Intern Med* 144: 172–180, 2006
  24. Sarnak MJ, Levey AS, Schoolwerth AC, Coresh J, Cullerton B, Hamm LL, McCullough PA, Kasiske BL, Kelepouris E, Klag MJ, Parfrey P, Pfeffer M, Raij L, Spinosa DJ, Wilson PW: Kidney disease as a risk factor for development of cardiovascular disease: A statement from the American Heart Association Councils on Kidney in Cardiovascular Disease, High Blood Pressure Research, Clinical Cardiology, and Epidemiology and Prevention. *Circulation* 108: 2154–2169, 2003
  25. Fox CS, Larson MG, Leip EP, Meigs JB, Wilson PW, Levy D: Glycemic status and development of kidney disease: The Framingham Heart Study. *Diabetes Care* 28: 2436–2440, 2005
  26. Perkins BA, Nelson RG, Ostrander BE, Blouch KL, Krolewski AS, Myers BD, Warram JH: Detection of renal function decline in patients with diabetes and normal or elevated GFR by serial measurements of serum cystatin C concentration: results of a 4-year follow-up study. *J Am Soc Nephrol* 16: 1404–1412, 2005
  27. Davies DF, Shock NW: Age changes in glomerular filtration rate, effective renal plasma flow, and tubular excretory capacity in adult males. *J Clin Invest* 29: 496–507, 1950
  28. Beauvieux MC, Le Moigne F, Lasseur C, Raffaitin C, Perlemoine C, Barthe N, Chauveau P, Combe C, Gin H, Rigalleau V: New predictive equations improve monitoring of kidney function in patients with diabetes. *Diabetes Care* 30: 1988–1994, 2007
  29. Rossing P, Rossing K, Gaede P, Pedersen O, Parving HH: Monitoring kidney function in type 2 diabetic patients with incipient and overt diabetic nephropathy. *Diabetes Care* 29: 1024–1030, 2006

---

See related editorial, "Cardiovascular Disease, Chronic Kidney Disease, and Type 2 Diabetes Mellitus: Proceeding with Caution at a Dangerous Intersection," on pages 5–7.

## CORRECTION

Schneider CA, Ferrannini E, DeFronzo R, Scherthaner G, Yates J, and Erdmann E: Effect of Pioglitazone on Cardiovascular Outcome in Diabetes and Chronic Kidney Disease. *J Am Soc Nephrol* 19: 182–187, 2008.

Please note the following corrections in the above article published in the January 2008 issue of the *Journal of the American Society of Nephrology*. In this article, the data errors were caused by (1) description of events at average follow-up rather than overall and (2) a transcription error. Also, the correct version of the Modification of Diet in Renal Disease (MDRD) formula is now described in Concise Methods. These errors do not alter the data interpretation or affect the study conclusions.

The following are corrections to the manuscript.

In the third paragraph of Results (p 184), the sentence “All-cause mortality rates were 7.7% ( $n = 21$ ) in the pioglitazone group and 13.6% ( $n = 44$ ) in the placebo group (HR, 0.75; 95% CI, 0.55 to 1.03)” should have read “All-cause mortality rates were 8.0% ( $n = 22$ ) in the pioglitazone group

and 13.9% ( $n = 45$ ) in the placebo group (HR, 0.55; 95% CI, 0.33 to 0.92).”

In the fourth paragraph of Results (p 184), the sentence “The proportion of patients who had a  $\text{GFR} \geq 60$  ml/min per  $1.73 \text{ m}^2$  and subsequently died from any cause was also similar between groups ( $n = 137$  [6.0%] with pioglitazone versus  $n = 130$  [5.7%] with placebo; HR, 1.09; 95% CI, 0.87 to 1.38)” should have read “The proportion of patients who had a  $\text{GFR} \geq 60$  ml/min per  $1.73 \text{ m}^2$  and subsequently died from any cause was also similar between groups ( $n = 148$  [6.5%] with pioglitazone versus  $n = 134$  [5.9%] with placebo; HR, 1.09; 95% CI, 0.87 to 1.38).”

In the first paragraph of Procedures in Concise Methods (p 186), the sentence “GFR was estimated using the simplified MDRD formula:  $186.2 \times \text{serum creatinine in mg/dl}^{-1.154} \times \text{age in yr}^{-0.203} \times 1.212$  if black  $\times 0.742$  if female” should have read “GFR was estimated using the simplified MDRD formula:  $186 \times \text{serum creatinine in milligrams per deciliter}^{-1.154} \times \text{age in years}^{-0.203} \times 0.742$  for women.”