

Carotid Endarterectomy Benefits Patients with CKD and Symptomatic High-Grade Stenosis

Anna Mathew,* Michael Eliasziw,[†] P.J. Devereaux,^{‡§} Jose G. Merino,^{||} Henry J.M. Barnett,^{||**} and Amit X. Garg^{**††} for the North American Symptomatic Carotid Endarterectomy Trial (NASCET) Collaborators

*Division of Nephrology, [†]Department of Clinical Neurological Sciences, ^{**}John P. Robarts Research Institute, ^{††}Department of Epidemiology and Biostatistics, University of Western Ontario, London, Ontario, Canada; [‡]Department of Medicine, Department of Community Health Sciences, University of Calgary, Calgary, Alberta, Canada; Departments of [‡]Clinical Epidemiology and Biostatistics and [§]Medicine, McMaster University, Hamilton, Ontario, Canada; and ^{||}Section on Stroke Diagnostics and Therapeutics, National Institute of Neurological Disorders and Stroke, National Institutes of Health, Bethesda, Maryland

ABSTRACT

Endarterectomy is generally recommended for symptomatic high-grade (70 to 99%) stenosis of the internal carotid artery, but whether this procedure is beneficial among patients with chronic kidney disease (CKD) is unknown. In this re-analysis of data from the North American Symptomatic Carotid Endarterectomy Trial, we included patients with symptomatic stenosis and either stage 3 CKD ($n = 524$) or preserved kidney function ($n = 966$; estimated GFR ≥ 60). For medically treated patients with high-grade stenosis, risk for ipsilateral stroke at 2 yr was significantly higher in patients with CKD than in those with preserved renal function (31.6 versus 19.3%; $P = 0.042$); carotid endarterectomy significantly reduced this risk by 82 and 51%, respectively. To prevent one ipsilateral stroke, the number needed to treat by endarterectomy was four for patients with CKD and 10 for patients with preserved renal function. Compared with patients with preserved renal function, those with CKD had similar rates of perioperative stroke and death but higher rates of cardiac events. In conclusion, patients with stage 3 CKD and symptomatic high-grade carotid stenosis gain a large benefit in stroke risk reduction after endarterectomy.

J Am Soc Nephrol 21: 145–152, 2010. doi: 10.1681/ASN.2009030287

Approximately 795,000 people in North America have a stroke every year, 185,000 of whom have recurrent strokes.¹ As a secondary prevention strategy, current practice guidelines recommend carotid endarterectomy for patients with symptomatic high grade (70 to 99%) carotid stenosis.² Endarterectomy is also offered to patients with moderate-grade (50 to 69%) stenosis, after considering factors such as age, gender, comorbidities, and severity of recent symptoms.²

It is estimated that >15 million Americans have chronic kidney disease (CKD), and the prevalence is increasing.³ Patients with CKD are at high risk for cardiovascular^{4–6} and cerebrovascular disease, including stroke^{7,8}; however, patients with CKD are less likely than others to undergo invasive proce-

dures to reduce this risk,⁹ a phenomenon sometimes called “renalism.”¹⁰ Although patients with CKD are prone to adverse events from procedures and treatments,^{11,12} in some situations patients with CKD derive larger absolute benefits than others because of their high baseline risk.^{13–16}

Received March 15, 2009. Accepted August 28, 2009.

Published online ahead of print. Publication date available at www.jasn.org.

Correspondence: Dr. Amit Garg, London Kidney Clinical Research Unit, Room ELL-101, Westminster, London Health Sciences Centre, 800 Commissioners Road East, London, Ontario N6A 4G5. Phone: 519-685-8502; Fax: 519-685-8072; E-mail: amit.garg@lhsc.on.ca

Copyright © 2010 by the American Society of Nephrology

Little is known about the effectiveness and safety of carotid endarterectomy in patients with CKD. No randomized trial has exclusively focused on endarterectomy in the CKD population, and it remains unlikely that such a trial will ever be conducted. The next best approach is to re-analyze previously conducted trials. Three large randomized trials have examined the benefit of carotid endarterectomy, namely the Asymptomatic Carotid Atherosclerosis Study (ACAS),¹⁷ the European Carotid Surgery Trial (ECST),¹⁸ and the North American Symptomatic Carotid Endarterectomy Trial (NASCET).¹⁹ Of the three trials, only NASCET collected baseline serum creatinine for all trial participants. The aim of this study was to examine the outcomes of patients with and without CKD among those enrolled in NASCET.

RESULTS

Among the 1517 patients who had $\geq 50\%$ internal carotid artery (ICA) stenosis, 25 did not have a baseline serum creatinine recorded and two had implausible values. The remaining 1490 (98.2%) patients were analyzed in this study. Because there were no differences in baseline characteristics between patients assigned to the medical ($n = 740$) and surgical ($n = 750$) arms in both the high-grade and moderate-grade stenosis categories, the baseline characteristics are reported in aggregate (Table 1).

Patients with CKD had a mean age of 69 yr and a mean estimated GFR (eGFR) of 49 ml/min per 1.73 m² compared with 64 yr and 79 ml/min per 1.73 m² among patients without CKD. In addition to being older, patients with CKD were more likely to be female and to have a history of hypertension and myocardial infarction (Table 1).

Of the 750 patients assigned to receive endarterectomy, six did not have surgery. Among the remaining 744 patients, 98.4% had their surgery within 30 d of randomization with a median time of 2 d. Of the 740 patients assigned to the medical arm, 6.9% received endarterectomy during follow-up. The overall median patient follow-up was 2 yr. Log binomial regression was used to calculate risk ratios for treatment group, eGFR category, and the cross-product, before and after adjustment for all baseline characteristics listed in Table 1, except for race, history of congestive heart failure (CHF), and history of arrhythmia. The prevalence of the last three characteristics was too low to include without destabilizing the regression model. The corresponding magnitudes of the unadjusted and adjusted risk ratios all were within 12% of each other, supporting an absence of confounding (Supplemental Tables 1 and 2).²⁰

For medically treated patients with high-grade stenosis, the 2-yr risk for ipsilateral stroke was higher in patients with CKD than those without CKD (31.6 *versus* 19.3%; $P = 0.042$). With surgery, there was a statistically significant relative risk reduc-

Table 1. Comparison of baseline patient characteristics

Characteristic	eGFR <60 ($n = 524$)	eGFR ≥ 60 ($n = 966$)	P
Age			<0.001
>65 yr (%)	73.3	44.4	
mean (range)	69 (38 to 89)	64 (31 to 85)	
Female gender (%)	37.6	27.1	<0.001
Black race (%)	1.5	3.8	0.01
Qualifying (presenting) ischemic event (%)			
stroke (not TIA)	41.2	38.8	0.37
hemispheric (not retinal)	72.1	71.3	0.74
History of (%)			
TIA or stroke within past 6 mo ^a	54.8	55.7	0.73
hypertension	73.7	54.3	<0.001
diabetes	22.5	21.0	0.50
MI	24.0	18.0	0.006
CHF	3.8	2.0	0.03
arrhythmia	4.2	5.3	0.36
hyperlipidemia	35.7	34.5	0.64
intermittent claudication	17.0	13.8	0.10
Smoking within past 12 mo (%)	34.5	50.2	<0.001
Systolic BP >160 mmHg (%)	23.5	16.7	0.001
Diastolic BP >90 mmHg (%)	13.0	12.0	0.59
Glucose >7 mmol/L (>126 mg/dl) (%)	20.0	21.2	0.59
Degree of ICA stenosis 70 to 99% (%)	41.4	44.5	0.25
eGFR (ml/min per 1.73 m ² ; mean [range])	49 (19 to 60)	79 (60 to 153)	–
Serum creatinine (μ mol/L; mean [range])	127 (86 to 292)	87 (39 to 133)	–
Serum creatinine (mg/dl; mean [range])	1.5 (0.9 to 3.3)	1.0 (0.4 to 1.5)	–

Characteristics were compared using a χ^2 test. TIA, transient ischemic attack; ICA, internal carotid artery stenosis; MI, myocardial infarction.

^aIn addition to the qualifying (presenting) event.

tion of 82.3% (95% confidence interval [CI] 54.5 to 93.1%) in the 2-yr risk for ipsilateral stroke for patients with CKD and 50.8% (95% CI 12.6 to 72.3%) for patients without CKD (Table 2). The number needed to treat by surgery to prevent one ipsilateral stroke within 2 yr was four for patients with CKD and 10 for patients without CKD. The difference in prognosis of patients with and without CKD is graphically illustrated in the left upper and lower panels of Figure 1.

Among patients with moderate-grade stenosis, the 2-yr medical risk of ipsilateral stroke in patients with CKD was approximate half of those with high grade stenosis (Table 3). Among patients with moderate-grade stenosis, the effectiveness of surgery was less and not statistically significant, with less separation between the medical and surgical cumulative outcome curves (Figure 1, right). A similar pattern of results was observed for the composite outcome of any stroke, MI, or vascular death, although they were not statistically significant for patients without CKD. Although the 2-yr risk for death for both the high-grade and moderate-grade stenosis was twice as high among patients with CKD compared with those without CKD, endarterectomy had no effect in reducing overall mortality (Tables 2 and 3). In considering perioperative risk, patients with CKD did not have higher rates of perioperative stroke or death when compared with those without CKD (Table 4). Patients with CKD did, however, have a significantly higher relative risk for perioperative cardiac events (MI, CHF, or arrhythmia; Table 4) even after adjustment for cardiac-related patient characteristics (Table 5).

DISCUSSION

After a comprehensive literature search and communication with carotid endarterectomy trialists, we conclude NASCET is the first and only large randomized trial of carotid endarterectomy in which renal function was assessed in trial participants.

Our results show patients with mild to moderate CKD and symptomatic high-grade carotid stenosis have at least a similar and perhaps a larger absolute benefit in stroke reduction after endarterectomy, compared with those without CKD. The risk for perioperative death was similar between patients with and without CKD; however, rates of perioperative cardiac complications (MI, CHF, and arrhythmias) were higher. This study provides some of the best evidence for physicians and patients to help them make decisions about the appropriateness of endarterectomy.

In those with high-grade carotid stenosis, it is true the benefits of endarterectomy on the prevention of ipsilateral stroke were observed to be greater in those with CKD than in those with preserved kidney function (absolute risk difference $P = 0.018$, relative risk reduction $P = 0.052$). In several large trials, $P < 0.10$ has been interpreted as a significant test for treatment effect modification in subgroup analysis (interaction), despite increasing the chance of type I error,^{21,22} yet cautious interpretation of the interaction terms is required for the NASCET results. The seeming benefit may be in part due to chance variation in the rates of stroke at 2 yr among surgically treated patients with CKD compared with those with preserved renal function (5.6 versus 9.5% respectively; Table 2). Nonetheless, all would agree that patients with mild to moderate CKD benefit at least equally from carotid endarterectomy compared with those without CKD, with no observed increase in the risk for perioperative death or stroke.

For patients with moderate-grade ICA stenosis (50 to 69% stenosis), NASCET results originally demonstrated the 5-yr rate of any ipsilateral stroke was 15.7% among patients who were treated surgically and 22.2% among those who were treated medically (absolute risk reduction of 6.5%; $P = 0.045$). Our results did not capture this modest but significant benefit of surgery in patients with CKD and moderate-grade stenosis. This may be due to the attenuated 2-yr period of patient follow-up used in our analysis. Thus, when considering endarter-

Table 2. Two-year risks for outcomes by treatment and CKD status (eGFR, ml/min per 1.73 m²) in patients with high-grade internal carotid artery stenosis (70 to 99%)

Parameter	Medical Risk (%)	Surgical Risk (%)	RRR (%)	Absolute Risk Difference (%)	P	Interaction Test (P)	
	(n = 126) ^a (n = 197) ^b	(n = 91) ^a (n = 233) ^b				Risk Difference	RRR
Ipsilateral stroke ^c							
eGFR <60	31.6	5.6	82.3	26.0 (15.1 to 36.8)	<0.001	0.018	0.051
eGFR ≥60	19.3	9.5	50.8	9.8 (1.9 to 17.7)	0.047		
Death (any cause)							
eGFR <60	9.4	9.7	-3.2	-0.3 (-11.1 to 10.5)	0.94	0.83	0.78
eGFR ≥60	5.9	4.9	16.9	1.0 (-4.4 to 6.4)	0.59		
Any stroke, MI, or vascular death							
eGFR <60	40.7	17.5	57.0	23.2 (9.6 to 36.7)	0.016	0.07	0.26
eGFR ≥60	23.0	15.0	34.8	8.0 (-1.0 to 17.0)	0.13		

Medical and surgical groups were compared using a log-rank test. RRR, relative risk reduction.

^aeGFR <60 ml/min per 1.73 m².

^beGFR ≥60 ml/min per 1.73 m².

^cTo provide a more conservative estimate of the benefits of endarterectomy, the outcome "ipsilateral stroke" includes any stroke and any death within 32 d of randomization (30 d postoperatively; median time from randomization to surgery was 2 d).

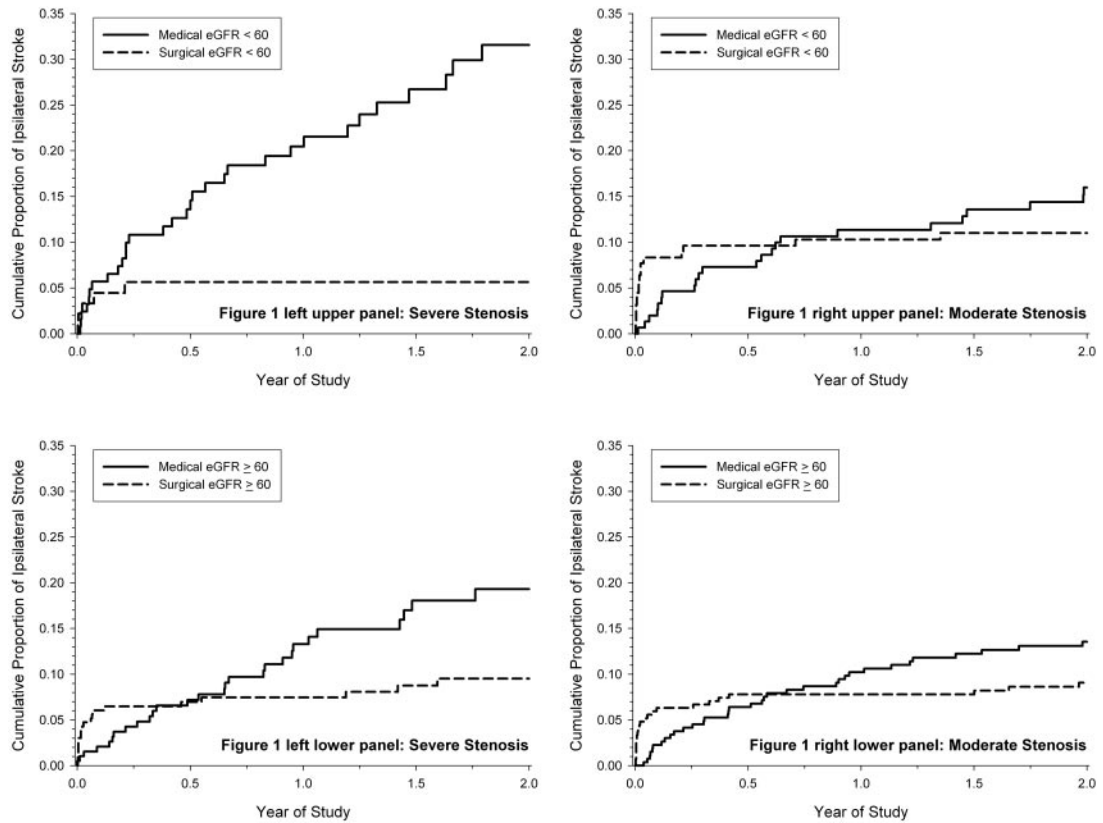


Figure 1. Cumulative proportion of ipsilateral stroke from Kaplan-Meier analyses by degree of ICA stenosis, eGFR level (ml/min per 1.73 m²), and treatment group is shown.

Table 3. Two-year risks of outcomes by treatment and CKD status (eGFR, ml/min per 1.73 m²) in patients with moderate-grade ICA stenosis (50 to 69%)

Parameter	Medical Risk (%)	Surgical Risk (%)	RRR (%)	Absolute Risk Difference (%; 95% CI)	P	Interaction Test (P)	
	(n = 151) ^a (n = 266) ^b	(n = 156) ^a (n = 270) ^b				Risk Difference	RRR
Ipsilateral stroke ^c							
eGFR <60	16.0	11.0	31.2	5.0 (−2.8 to 12.8)	0.34	0.92	0.94
eGFR ≥60	13.6	9.1	33.1	4.5 (−1.0 to 9.9)	0.15		
Death (any cause)							
eGFR <60	10.7	10.4	2.8	0.3 (−6.7 to 7.3)	0.99	0.89	0.88
eGFR ≥60	5.1	5.3	−3.9	−0.2 (−4.1 to 3.6)	0.88		
Any stroke, MI, or vascular death							
eGFR <60	29.9	19.7	34.1	10.2 (−1.3 to 18.4)	0.08	0.26	0.35
eGFR ≥60	21.5	18.2	15.3	3.3 (−2.7 to 11.1)	0.45		

Medical and surgical groups were compared using a log-rank test. RRR, Relative Risk Reduction.

^aeGFR <60 ml/min per 1.73 m².

^beGFR ≥60 ml/min per 1.73 m².

^cTo provide a more conservative estimate of the benefits of endarterectomy, the outcome “ipsilateral stroke” includes any stroke and any death within 32 d of randomization (30 d postoperatively; median time from randomization to surgery was 2 d).

ectomy in a patients with CKD and moderate-grade stenosis, physicians should consider current American Heart Association guidelines: “Recommendation for surgery should be based on clinical judgment, comorbid patient characteristics, and severity of initial cerebrovascular symptoms.”²²

Our study has several strengths. We used an intention-to-treat analysis with patient follow-up of 2 yr. Nearly all patients

in our analysis remained in their randomized arm, with minimal crossover and no loss to follow-up. We adhered to published guidelines for subgroup analysis to guard against spurious results.^{20,23,24} We prespecified the analysis including the statistical test for treatment effect modification, and we reduced false-positive results by avoiding multiple subgroup analyses. We also reported the same primary outcomes as the

Table 4. 30-Day perioperative risks of outcomes by CKD status (eGFR, ml/min per 1.73 m²) for patients assigned to carotid endarterectomy (*n* = 744)

Parameter	eGFR <60 (%; <i>n</i> = 245)	eGFR ≥60 (%; <i>n</i> = 499)	Risk Difference (%; 95% CI)	<i>P</i>
Any stroke or death	6.9	6.4	0.5 (−3.3 to 4.4)	0.79
Any nonfatal stroke	4.9	5.6	−0.7 (−4.1 to 2.7)	0.68
Death (any cause)	2.0	0.8	1.2 (−0.7 to 3.2)	0.15
MI, CHF, or arrhythmia	6.5	1.2	5.3 (2.1 to 8.6)	<0.001
MI	2.0	0.6	1.4 (−0.5 to 3.3)	0.07
CHF	1.6	0.2	1.4 (−0.2 to 3.1)	0.025
Arrhythmia	3.6	0.6	3.0 (0.6 to 5.5)	0.002

Includes patients who had moderate and severe stenoses at time of randomization and actually had surgery. Patients with and without CKD were compared using a χ^2 test.

Table 5. 30-Day perioperative unadjusted and adjusted risk ratios for patients assigned to carotid endarterectomy (*n* = 744) with CKD compared to those without CKD

Parameter	Unadjusted Risk Ratio (95% CI)	<i>P</i>	Adjusted Risk Ratio (95% CI)	<i>P</i>
Any stroke or death	1.08 (0.61 to 1.90)	0.79	1.30 (0.73 to 2.33)	0.37
Any nonfatal stroke	0.87 (0.45 to 1.69)	0.68	1.09 (0.54 to 2.20)	0.81
Death (any cause)	2.55 (0.69 to 9.40)	0.16	2.67 (0.91 to 7.84)	0.07
MI, CHF, or arrhythmia	5.43 (2.15 to 13.71)	<0.001	3.98 (1.60 to 9.90)	0.003
MI	3.39 (0.82 to 14.09)	0.09	3.14 (0.81 to 12.23)	0.10
CHF	8.14 (0.92 to 72.4)	0.06	5.82 (0.77 to 44.07)	0.09
Arrhythmia	6.11 (1.67 to 22.37)	0.006	3.99 (1.17 to 13.65)	0.027

Includes patients who had moderate and severe stenoses at time of randomization and actually had surgery. Patients with and without CKD were compared using log-binomial regression. Patients without CKD served as the referent group. Risk ratios were adjusted for age, gender, and a history of hypertension, MI, or smoking.

original trial; however, several limitations of this study merit consideration. First, serum creatinine was measured in the laboratory of each NASCET participating center and was not standardized for the application of modern eGFR estimating equations.²⁵ Given the historical nature of the study, we were also unable to attain more information about the methods and quality control measures used to assay serum creatinine in each laboratory. Although this could slightly change the number of NASCET patients with CKD, it does not alter the clinical importance of our results. Second, the NASCET trial excluded patients with a serum creatinine greater than twice the upper limit of normal. Among the 524 patients with CKD analyzed in this study, the mean eGFR was 49 ml/min per 1.73 m², with a minimum of 19 ml/min per 1.73 m². Thus, our results apply directly to patients with stage 3 CKD but cannot be generalized to patients with more severe CKD or those who have kidney failure and require dialysis. Finally, NASCET was published before the widespread use of new medical and surgical techniques for secondary stroke prevention. Only 14% of patients were receiving lipid-lowering therapy at time of enrollment, and aspirin was the only recommended antiplatelet agent. Current guidelines for secondary stroke prevention include stringent control of BP and lipids and antiplatelet therapy with clopidogrel or extended-release dipyridole and aspirin.² Compared with risks reported in NASCET, improved medical care has certainly reduced the risk for stroke irrespective of the receipt of endarterectomy.

CKD often coexists with older age, hypertension, and a his-

tory of atherosclerotic disease (Table 1). Each of these conditions is an important risk factor for arterial vascular disease; however, a greater benefit of endarterectomy for high-grade carotid stenosis in patients with CKD was observed even after accounting for baseline differences to those without CKD. Our rationale for studying the subgroup of patients with CKD was to establish the effectiveness and safety of endarterectomy in this “highest risk” group for recurrent vascular events, as highlighted in an American Heart Association scientific statement.²⁵

Our results provide strong evidence for the benefit of carotid endarterectomy in patients with stage 3 CKD; however, a higher risk for perioperative mortality in patients with CKD compared with those without CKD has been described in several previous studies.^{26–28} These studies followed patients with severe CKD, including those who were undergoing dialysis. Our previous meta-analysis confirms a graded increase in the risk for postoperative mortality with declining eGFR.¹¹ Thus, a risk-benefit profile that seems favorable for patients with stage 3 CKD may be less so in those with more advanced kidney failure. A recent review of the literature confirmed the need for additional large-scale, multicenter, prospective trials to identify high-risk patients and quantify their risk better.²⁹

Carotid stenting was recently studied as an alternative therapy to endarterectomy in the patient at high risk for surgical complications.^{30–32} It is not known whether carotid stenting is better than endarterectomy for stroke prevention with less perioperative complications. American Heart Association

guidelines currently describe carotid stenting as “not inferior” to endarterectomy in symptomatic patients with high-grade stenosis and difficult surgical access or medical conditions that greatly increase risk for surgery.² Thus, carotid stenting could be considered in patients who have CKD and symptomatic ICA stenosis and pose a high operative risk.

To generalize our results to individual patient care, physicians must also be aware of local perioperative complication rates. Patient selection and surgical expertise at NASCET study centers resulted in low rates of perioperative complications from carotid endarterectomy. Variability in these rates could alter the benefits of carotid endarterectomy demonstrated in this study.

Finally, in clinical practice, it is common for beneficial invasive therapies to be withheld from patients with CKD because of concern for adverse events.^{10,12} This phenomenon is sometimes called “renalism.”¹⁰ Patients with CKD are frequently excluded from large, randomized trials, and few subgroup analyses for such patients are ever reported.³³ In this broader context, this study is important to help reverse this practice.

CONCISE METHODS

The design of NASCET has been described elsewhere.¹⁹ Briefly, this was a randomized clinical trial to determine the efficacy and safety of carotid endarterectomy in patients with symptomatic ICA stenosis. Patients were eligible for randomization when they had a transient ischemic attack or nondisabling stroke in the preceding 180 d attributable to a carotid artery stenosis on selective angiography. Exclusion criteria were renal impairment defined as greater than twice the normal serum urea nitrogen or serum creatinine value as assessed in the laboratory of each participating center, significant liver disease, diseases likely to cause death within 5 yr, cardiac conditions likely to cause cardioembolism, and intracranial stenosis more significant than the carotid artery lesion. Eligible patients were randomly assigned to endarterectomy plus best medical care or best medical care alone, stratified by center and by degree of stenosis. Neurologists assessed all patients at entry; at 1, 3, 6, 9, and 12 mo; and every 4 mo thereafter. A patient’s serum creatinine was recorded as part of the baseline data collection process. A blinded external committee adjudicated all primary, secondary, and perioperative clinical outcomes.

The timeline of events after the initiation of NASCET is as follows. NASCET began enrollment in December 1987 and stratified patients by degree of ICA stenosis. High-grade stenosis was defined as 70 to 99%, and moderate-grade stenosis was defined as <70%. The measurement of carotid stenosis was strictly defined by the NASCET protocol. Stenosis was calculated using the ratio of the luminal diameter of the narrowest segment of the diseased portion of the artery to the diameter of the artery beyond any poststenotic dilation, determined using angiography.³⁴ By February 1991, 659 patients with high-grade stenosis had been enrolled. Endarterectomy in this group was associated with a significant reduction in ipsilateral stroke (absolute risk reduction of 17%; 95% CI 10 to 24%). Enrollment into this arm of the

study ceased, and these early NASCET results were published.³⁴ Eighteen percent of patients who had high-grade stenosis and were randomly assigned to medical therapy then received an endarterectomy. NASCET continued to enroll patients with moderate-grade stenosis and followed all patients until trial end in December 1997. Final NASCET results were published in 1998.¹⁹ To compare reasonably the treatment groups before the large patient crossover for patients enrolled with high-grade stenosis, we counted in this analysis only outcomes that occurred before February 1991.

Consistent with National Kidney Foundation Kidney Disease Outcomes Quality Initiative (K/DOQI) current recommendations,³⁵ we defined CKD by a GFR <60 ml/min per 1.73 m². We used the Modification of Diet in Renal Disease (MDRD) equation to estimate GFR, where $eGFR$ in ml/min per 1.73 m² = $186 \times (\text{serum creatinine [in mg/dl]}^{-1.154}) \times (\text{age})^{-0.203} \times (0.742 \text{ if female}) \times (1.210 \text{ if black})$.³⁶ In a supportive analysis, we defined a GFR <60 ml/min per 1.73 m² by a serum creatinine >137 μmol/L (1.5 mg/dl) in men and >104 μmol/L (1.2 mg/dl) in women.³⁷

We analyzed the same perioperative and long-term outcomes as in the original NASCET publications.^{19,38} We reported the outcomes of patients with high-grade (70 to 99%) carotid stenosis separately from those with moderate-grade (50 to 69%) carotid stenosis. The two primary outcomes, analyzed separately, were ipsilateral stroke and death (from any cause) within 2 yr of randomization. The ipsilateral stroke outcome included all strokes (at any location) and all deaths (from any cause) during the 30-d postoperative period in the surgical arm and during the 32-d period after randomization in the medical arm, because median time from randomization to surgery was 2 d. Including these early events in the 2-yr outcome of ipsilateral stroke provides a more conservative estimate of the benefits of endarterectomy. The secondary outcome was a composite of any stroke, MI, and vascular death. Thirty-day perioperative outcomes included death, stroke, MI (based on electrocardiogram and cardiac enzyme change), CHF, and arrhythmia requiring treatment with antiarrhythmic medication.

The intention-to-treat principle guided all of our analyses. We compared baseline characteristics for patients with and without CKD using χ^2 tests. We assessed the effect of endarterectomy using a log-rank test from Kaplan-Meier analyses and plotted cumulative outcome curves. From these curves, we derived the risks for outcome within 2 yr of randomization. We calculated SEs for the absolute and relative risk reductions and 95% CIs using Greenwood’s formula.³⁹ We also calculated the number of patients who would need to be treated with endarterectomy to prevent one additional outcome within 2 yr after the procedure. We used recommended methods for subgroup analysis to determine whether the risk differences and relative risk reductions differed among patients with and without CKD.^{23,24,40,41} Because the statistical test of treatment effect modification is known to be underpowered, $P < 0.10$ was considered to be statistically significant.⁴⁰ χ^2 tests were used to compare perioperative risks for outcomes between patients with and without CKD. We repeated these analyses using log binomial regression modeling to assess whether any of the baseline patient characteristics influenced the findings. We avoided Cox proportional hazards modeling because the hazard assumption was not expected to be met because of perioperative adverse events among surgical patients (compared with medical patients). All analyses were performed using SAS 9.1.3 (SAS Institute, Cary, NC).

ACKNOWLEDGMENTS

This analysis was supported by a research grant from the Physicians Services Incorporated Foundation. The NASCET trial was supported by grant R01-NS-24456 from the National Institute of Neurological Disorders and Stroke. M.E. was supported by the Alberta Heritage Foundation for Medical Research, P.J.D. was supported by a New Investigator Award from the Canadian Institutes of Health Research, and A.X.G. was supported by a Clinician Scientist Award from the Canadian Institutes of Health Research.

We acknowledge Dr. Brian Haynes and the NASCET collaborators for help and support.

DISCLOSURES

None.

REFERENCES

- Lloyd-Jones D, Adams R, Carnethon M, De Simone G, Ferguson TB, Flegal K, Ford E, Furie K, Go A, Greenlund K, Haase N, Hailpern S, Ho M, Howard V, Kissela B, Kittner S, Lackland D, Lisabeth L, Marelli A, McDermott M, Meigs J, Mozaffarian D, Nichol G, O'Donnell C, Roger V, Rosamond W, Sacco R, Sorlie P, Stafford R, Steinberger J, Thom T, Wasserthiel-Smoller S, Wong N, Wylie-Rosett J, Hong Y: Heart disease and stroke statistics: 2009 update—A report from the American Heart Association Statistics Committee and Stroke Statistics Subcommittee. *Circulation* 119: e21–e181, 2009
- Sacco RL, Adams R, Albers G, Alberts MJ, Benavente O, Furie K, Goldstein LB, Gorelick P, Halperin J, Harbaugh R, Johnston SC, Katzan I, Kelly-Hayes M, Kenton EJ, Marks M, Schwamm LH, Tomsick TL: Guidelines for prevention of stroke in patients with ischemic stroke or transient ischemic attack: A statement for healthcare professionals from the American Heart Association/American Stroke Association Council on Stroke: Co-sponsored by the Council on Cardiovascular Radiology and Intervention: the American Academy of Neurology affirms the value of this guideline. *Stroke* 37: 577–617, 2006
- Coresh J, Selvin E, Stevens LA, Manzi J, Kusek JW, Eggers P, Van Lente F, Levey AS: Prevalence of chronic kidney disease in the United States. *JAMA* 298: 2038–2047, 2007
- Weiner DE, Tighiouart H, Amin MG, Stark PC, MacLeod B, Griffith JL, Salem DN, Levey AS, Sarnak MJ: Chronic kidney disease as a risk factor for cardiovascular disease and all-cause mortality: A pooled analysis of community-based studies. *J Am Soc Nephrol* 15: 1307–1315, 2004
- Tonelli M, Jose P, Curhan G, Sacks F, Braunwald E, Pfeffer M: Cholesterol and Recurrent Events (CARE) Trial Investigators: Proteinuria, impaired kidney function, and adverse outcomes in people with coronary disease—Analysis of a previously conducted randomised trial. *BMJ* 332: 1426, 2006
- Tonelli M, Wiebe N, Culleton B, House A, Rabbat C, Fok M, McAlister F, Garg AX: Chronic kidney disease and mortality risk: A systematic review. *J Am Soc Nephrol* 17: 2034–2047, 2006
- Zhang L, Zuo L, Wang F, Wang M, Wang S, Lv J, Liu L, Wang H: Cardiovascular disease in early stages of chronic kidney disease in a Chinese population. *J Am Soc Nephrol* 17: 2617–2621, 2006
- Koren-Morag N, Goldbourt U, Tanne D: Renal dysfunction and risk of ischemic stroke or TIA in patients with cardiovascular disease. *Neurology* 67: 224–228, 2006
- Charytan DM, Setoguchi S, Solomon DH, Avorn J, Winkelmayer WC: Clinical presentation of myocardial infarction contributes to lower use of coronary angiography in patients with chronic kidney disease. *Kidney Int* 71: 938–945, 2007
- Chertow GM, Normand SL, McNeil BJ: “Renalism”: Inappropriately low rates of coronary angiography in elderly individuals with renal insufficiency. *J Am Soc Nephrol* 15: 2462–2468, 2004
- Mathew A, Devereaux PJ, O'Hare A, Tonelli M, Thiessen-Philbrook H, Nevis IF, Iansavichus AV, Garg AX: Chronic kidney disease and post-operative mortality: A systematic review and meta-analysis. *Kidney Int* 73: 1069–1081, 2008
- Ix JH, Mercado N, Shlipak MG, Lemos PA, Boersma E, Lindeboom W, O'Neill WW, Wijns W, Serruys PW: Association of chronic kidney disease with clinical outcomes after coronary revascularization: The Arterial Revascularization Therapies Study (ARTS). *Am Heart J* 149: 512–519, 2005
- Solomon SD, Rice MM, A Jablonski K, Jose P, Domanski M, Sabatine M, Gersh BJ, Rouleau J, Pfeffer MA, Braunwald E: Prevention of Events with ACE inhibition (PEACE) Investigators: Renal function and effectiveness of angiotensin-converting enzyme inhibitor therapy in patients with chronic stable coronary disease in the Prevention of Events with ACE inhibition (PEACE) trial. *Circulation* 114: 26–31, 2006
- Shepherd J, Kastelein JJ, Bittner V, Deedwania P, Breazna A, Dobson S, Wilson DJ, Zuckerman A, Wenger NK: TNT (Treating to New Targets) Investigators: Intensive lipid lowering with atorvastatin in patients with coronary heart disease and chronic kidney disease: The TNT (Treating to New Targets) study. *J Am Coll Cardiol* 51: 1448–1454, 2008
- Mann JF, Gerstein HC, Pogue J, Bosch J, Yusuf S: Renal insufficiency as a predictor of cardiovascular outcomes and the impact of ramipril: The HOPE randomized trial. *Ann Intern Med* 134: 629–636, 2001
- Hansson L, Zanchetti A, Carruthers SG, Dahlöf B, Elmfeldt D, Julius S, Ménard J, Rahn KH, Wedel H, Westerling S: Effects of intensive blood-pressure lowering and low-dose aspirin in patients with hypertension: Principal results of the Hypertension Optimal Treatment (HOT) randomised trial. *Lancet* 351: 1755–1762, 1998
- Executive Committee for the Asymptomatic Carotid Atherosclerosis Study: Endarterectomy for asymptomatic carotid artery stenosis. *JAMA* 273: 1421–1428, 1995
- Randomised trial of endarterectomy for recently symptomatic carotid stenosis: Final results of the MRC European Carotid Surgery Trial (ECST). *Lancet* 351: 1379–1387, 1998
- Barnett HJ, Taylor DW, Eliasziw M, Fox AJ, Ferguson GG, Haynes RB, Rankin RN, Clagett GP, Hachinski VC, Sackett DL, Thorpe KE, Meldrum HE, Spence JD: Benefit of carotid endarterectomy in patients with symptomatic moderate or severe stenosis. North American Symptomatic Carotid Endarterectomy Trial Collaborators. *N Engl J Med* 339: 1415–1425, 1998
- Maldonado G, Greenland S: Simulation study of confounder-selection strategies. *Am J Epidemiol* 138: 923–936, 1993
- Ziegler D, Pritchett YL, Wang F, Desai D, Robinson MJ, Hall JA, Chappell AS: Impact of disease characteristics on the efficacy of duloxetine in diabetic peripheral neuropathic pain. *Diabetes Care* 30: 664–669, 2007
- Furberg CD, Vittinghoff E, Davidson M, Herrington DM, Simon JA, Wenger NK, Hulley S: Subgroup interactions in the Heart and Estrogen/Progestin Replacement Study: Lessons learned. *Circulation* 105: 917–922, 2002
- Wang R, Lagakos SW, Ware JH, Hunter DJ, Drazen JM: Statistics in medicine: Reporting of subgroup analyses in clinical trials. *N Engl J Med* 357: 2189–2194, 2007
- Oxman AD, Guyatt GH: A consumer's guide to subgroup analyses. *Ann Intern Med* 116: 78–84, 1992
- Myers GL, Miller WG, Coresh J, Fleming J, Greenberg N, Greene T, Hostetter T, Levey AS, Panteghini M, Welch M, Eckfeldt JH: National Kidney Disease Education Program Laboratory Working Group: Recommendations for improving serum creatinine measurement: A report

- from the Laboratory Working Group of the National Kidney Disease Education Program. *Clin Chem* 52: 5–18, 2006
26. Ayerdi J, Sampson LN, Deshmukh N, Farid A, Gupta SK: Carotid endarterectomy in patients with renal insufficiency: Should selection criteria be different in patients with renal insufficiency? *Vasc Surg* 35: 429–435, 2001
 27. Debing E, Van den Brande P: Chronic renal insufficiency and risk of early mortality in patients undergoing carotid endarterectomy. *Ann Vasc Surg* 20: 609–613, 2006
 28. Stoner MC, Abbott WM, Wong DR, Hua HT, Lamuraglia GM, Kwolek CJ, Watkins MT, Agnihotri AK, Henderson WG, Khuri S, Cambria RP: Defining the high-risk patient for carotid endarterectomy: An analysis of the prospective National Surgical Quality Improvement Program database. *J Vasc Surg* 43: 285–295, 2006
 29. Govindarajan G, Saab G, Whaley-Connell A: Outcomes of carotid revascularization in patients with chronic kidney disease. *Adv Chronic Kidney Dis* 15: 347–354, 2008
 30. Mas JL, Trinquart L, Leys D, Albuher JF, Rousseau H, Viguier A, Bossavy JP, Denis B, Piquet P, Garnier P, Viader F, Touzé E, Julia P, Giroud M, Krause D, Hosseini H, Becquemin JP, Hinzelin G, Houdart E, Hénon H, Neau JP, Bracard S, Onnient Y, Padovani R, Chatellier G: EVA-3S investigators: Endarterectomy Versus Angioplasty in Patients with Symptomatic Severe Carotid Stenosis (EVA-3S) trial: Results up to 4 years from a randomised, multicentre trial. *Lancet Neurol* 7: 885–892, 2008
 31. Gurm HS, Yadav JS, Fayad P, Katzen BT, Mishkel GJ, Bajwa TK, Ansel G, Strickman NE, Wang H, Cohen SA, Massaro JM, Cutlip DE: SAPHIRE Investigators: Long-term results of carotid stenting versus endarterectomy in high-risk patients. *N Engl J Med* 358: 1572–1579, 2008
 32. Eckstein HH, Ringleb P, Allenberg JR, Berger J, Fraedrich G, Hacke W, Hennerici M, Stingele R, Fiehler J, Zeumer H, Jansen O: Results of the Stent-Protected Angioplasty versus Carotid Endarterectomy (SPACE) study to treat symptomatic stenoses at 2 years: A multinational, prospective, randomised trial. *Lancet Neurol* 7: 893–902, 2008
 33. Coca SG, Krumholz HM, Garg AX, Parikh CR: Underrepresentation of renal disease in randomized controlled trials of cardiovascular disease. *JAMA* 296: 1377–1384, 2006
 34. North American Symptomatic Carotid Endarterectomy Trial Collaborators: Beneficial effect of carotid endarterectomy in symptomatic patients with high-grade carotid stenosis. *N Engl J Med* 325: 445–453, 1991
 35. National Kidney Foundation: K/DOQI clinical practice guidelines for chronic kidney disease: Evaluation, classification, and stratification. *Am J Kidney Dis* 39: S1–S266, 2002
 36. Levey AS, Bosch JP, Lewis JB, Greene T, Rogers N, Roth D: A more accurate method to estimate glomerular filtration rate from serum creatinine: A new prediction equation. Modification of Diet in Renal Disease Study Group. *Ann Intern Med* 130: 461–470, 1999
 37. Couchoud C, Pozet N, Labeuw M, Pouteil-Noble C: Screening early renal failure: Cut-off values for serum creatinine as an indicator of renal impairment. *Kidney Int* 55: 1878–1884, 1999
 38. Paciaroni M, Eliasziw M, Kappelle LJ, Finan JW, Ferguson GG, Barnett HJ: Medical complications associated with carotid endarterectomy. North American Symptomatic Carotid Endarterectomy Trial (NASCET). *Stroke* 30: 1759–1763, 1999
 39. Greenwood M: A report on the natural duration of cancer. *Reports on Public Health and Medical Subjects* 33: 1–26, 1926
 40. Selvin S: Variation and bias. In: *Statistical Analysis of Epidemiologic Data*, 3rd Ed., Oxford, Oxford University Press, 2004, pp 54–69
 41. Lagakos SW: The challenge of subgroup analyses: Reporting without distorting. *N Engl J Med* 354: 1667–1669, 2006

See related editorial, "Management of Symptomatic Carotid Stenosis in Individuals with CKD," on pages 9–11.

Supplemental information for this article is available online at <http://www.jasn.org/>.



1725 I Street NW • Suite 510 • Washington, DC 20006
Tel 202-659-0599 • Fax 202-659-0709 • www.asn-online.org

EMBARGOED FOR RELEASE UNTIL 5:00 PM ON DECEMBER 10, 2009

Contacts

Shari Leventhal: 202-416-0658, sleventhal@asn-online.org

Julia Capaldi: 519-646-6100 ext. 61098, julia.capaldi@lawsonresearch.com

**KIDNEY DISEASE PATIENTS BENEFIT FROM SURGERY
TO PREVENT STROKE**

Washington, DC (December 4, 2009) — Physicians should be comfortable referring some patients with chronic kidney disease (CKD) for effective stroke prevention surgery, according to a study appearing in an upcoming issue of the *Journal of the American Society Nephrology* (JASN). The findings indicate that CKD patients gain a significant benefit from the procedures without an increased risk of dying from surgical complications.

For people who develop blockages in their arteries, physicians recommend surgery to clear the blood vessels and lower the risk of stroke. However, physicians are often hesitant to refer patients with CKD to undergo this type of surgery—called carotid endarterectomy—because CKD patients have a high risk of complications and death after undergoing invasive surgeries.

Amit Garg MD, PhD, and Anna Mathew, MD (Lawson Health Research Institute and The University of Western Ontario, Canada), and their colleagues wondered about the role of surgery in preventing strokes in CKD patients. They analyzed data from the North American Symptomatic Carotid Endarterectomy Trial (NASCET), and found that carotid endarterectomy dramatically reduces a CKD patient’s risk of future strokes. Dr. Garg, Dr. Mathew, and colleagues examined the benefits and risks of carotid endarterectomy in CKD patients by analyzing the NASCET kidney function data (gathered during the course of the trial but unpublished). They examined information from 524 CKD patients and compared it with information from 966 individuals with normal kidney function.

The analysis revealed that when patients with mild to moderate CKD underwent carotid endarterectomy, their risk of stroke was greatly reduced while their risk of death was not increased. The risk of experiencing a stroke over a two-year period was reduced by 82%.

“We hope the results of our important study inform physicians about the appropriateness of carotid endarterectomy surgery for their patients with kidney disease,” said Dr. Garg.

MORE

The authors report no financial disclosures. Study co-authors include Henry Barnett, MD (The University of Western Ontario, Canada), Michael Eliasziw, PhD (University of Calgary, Canada), PJ Devereaux MD, PhD (McMaster University, Canada), and Jose Merino, MD (National Institute of Neurological Disorders and Stroke), for the North American Symptomatic Carotid Endarterectomy Trial (NASCET) Collaborators.

The article, entitled “Benefit of Carotid Endarterectomy in Patients with Chronic Kidney Disease,” will appear online at <http://jasn.asnjournals.org/> on December 10, 2009, doi 10.1681/ASN.2009030287.

The American Society of Nephrology (ASN) does not offer medical advice. All content in ASN publications is for informational purposes only, and is not intended to cover all possible uses, directions, precautions, drug interactions, or adverse effects. This content should not be used during a medical emergency or for the diagnosis or treatment of any medical condition. Please consult your doctor or other qualified health care provider if you have any questions about a medical condition, or before taking any drug, changing your diet or commencing or discontinuing any course of treatment. Do not ignore or delay obtaining professional medical advice because of information accessed through ASN. Call 911 or your doctor for all medical emergencies.

Founded in 1966, the American Society of Nephrology (ASN) is the world’s largest professional society devoted to the study of kidney disease. Comprised of 11,000 physicians and scientists, ASN continues to promote expert patient care, to advance medical research, and to educate the renal community. ASN also informs policymakers about issues of importance to kidney doctors and their patients. ASN funds research, and through its world-renowned meetings and first-class publications, disseminates information and educational tools that empower physicians.

###