

## Pulmonary Congestion Predicts Cardiac Events and Mortality in ESRD

Carmine Zoccali,\* Claudia Torino,\* Rocco Tripepi,\* Giovanni Tripepi,\* Graziella D'Arrigo,\* Maurizio Postorino,\* Luna Gargani,<sup>†</sup> Rosa Sicari,<sup>†</sup> Eugenio Picano,<sup>†</sup> and Francesca Mallamaci,\* on behalf of the Lung US in CKD Working Group

\*National Research Council-Institute of Biomedicine, Clinical Epidemiology and Physiopathology of Renal Diseases and Hypertension, Reggio Calabria, Italy; and <sup>†</sup>National Research Council-Institute of Clinical Physiology, Pisa, Italy

### ABSTRACT

Pulmonary congestion is highly prevalent and often asymptomatic among patients with ESRD treated with hemodialysis, but whether its presence predicts clinical outcomes is unknown. Here, we tested the prognostic value of extravascular lung water measured by a simple, well validated ultrasound B-lines score (BL-US) in a multicenter study that enrolled 392 hemodialysis patients. We detected moderate-to-severe lung congestion in 45% and very severe congestion in 14% of the patients. Among those patients with moderate-to-severe lung congestion, 71% were asymptomatic or presented slight symptoms of heart failure. Compared with those patients having mild or no congestion, patients with very severe congestion had a 4.2-fold risk of death (HR=4.20, 95% CI=2.45–7.23) and a 3.2-fold risk of cardiac events (HR=3.20, 95% CI=1.75–5.88) adjusted for NYHA class and other risk factors. Including the degree of pulmonary congestion in the model significantly improved the risk reclassification for cardiac events by 10% ( $P<0.015$ ). In summary, lung ultrasound can detect asymptomatic pulmonary congestion in hemodialysis patients, and the resulting BL-US score is a strong, independent predictor of death and cardiac events in this population.

*J Am Soc Nephrol* 24: 639–646, 2013. doi: 10.1681/ASN.2012100990

Volume expansion is perhaps the most insidious and common modifiable risk factor for the exceedingly high death risk of patients with kidney failure on dialysis (CKD stage 5D).<sup>1</sup> Fluid accumulation as assessed by weight change between dialyses<sup>2</sup> as well as total body water measured before dialysis<sup>3</sup> or by relative plasma volume monitoring during dialysis<sup>4</sup> predicts death and cardiovascular events independently of other risk factors in this population, and correction of volume overload is considered as a major factor underlying the beneficial effects of frequent hemodialysis schedules. Simple, noninvasive, reliable methods for measuring total body water in dialysis patients exist,<sup>5</sup> but these estimates *per se* do not provide sufficient information for guiding the prescription of extracellular fluids removal during dialysis in most patients.<sup>6</sup> In today's dialysis population, mainly composed of elderly patients with compromised left ventricular function,<sup>7</sup> measures of a critical component of fluid volume like extravascular lung water<sup>8</sup> may provide useful

information for risk stratification and ultrafiltration prescription in this high-risk population.

Extravascular lung water is related to the ventricular filling pressure of the left ventricle (LV; *i.e.*, an established biomarker for risk stratification and prescribing and monitoring fluids therapy in high-risk patients).<sup>9</sup> Lung ultrasound (US) is a novel, validated technique that has been increasingly applied to estimate lung water in patients with heart disease<sup>10</sup> and patients with acute respiratory failure treated in intensive care units.<sup>11</sup> The rationale of this technique is that, in the presence of lung

Received October 13, 2012. Accepted December 6, 2012.

Published online ahead of print. Publication date available at [www.jasn.org](http://www.jasn.org).

**Correspondence:** Prof. Carmine Zoccali, Nephrology, Hypertension and Renal Transplantation Unit, Ospedali Riuniti, 89124 Reggio Calabria, Italy. Email: [carmine.zoccali@tin.it](mailto:carmine.zoccali@tin.it)

Copyright © 2013 by the American Society of Nephrology

congestion, the US beam is reflected by thickened interlobular septa, a phenomenon generating hyperechoic reverberation artifacts between edematous septa and the overlying pleura (*i.e.*, US bundles at narrow basis going from the US transducer to the limit of the screen, the so-called lung comets,<sup>12</sup> which can be considered as a US equivalent of B lines [BL-US] detected in chest x-rays).<sup>13</sup> The number of these US bundles is associated with LV filling pressure and allows us to detect and quantify lung water.<sup>14</sup> In a single-center feasibility study, we found that this technique has a high interobserver and inter-US probes reproducibility.<sup>15</sup> Importantly, pulmonary congestion as assessed by the BL-US score is quite common among asymptomatic hemodialysis<sup>15,16</sup> and peritoneal dialysis<sup>17</sup> patients.

Although clinical trials remain the definitive test for the assessing the usefulness of biomarkers in clinical practice, prognostic studies are a fundamental step for testing new biomarkers. In this multicenter study, we have, therefore, investigated the prognostic value of lung US in a multicenter cohort study. The scope of this study was that of assessing whether lung US may predict death and cardiac events beyond and above classic and CKD-related risk factors and symptoms of heart failure as assessed by the New York Heart Association (NYHA) classification in the hemodialysis population.

## RESULTS

The study cohort was extracted from the whole population of 11 dialysis units, which was formed by 462 hemodialysis patients, all of whom were invited to participate into this study. Seventy patients refused. Therefore, 392 patients were enrolled into the study. The mean age was  $65 \pm 15$  years, 63% were males, 42% were current smokers, 9% were past smokers, and 29% were patients with diabetes (Table 1). Only 41 patients had less than or equal to five BL-US. Lung congestion was mild (BL-US ranging from 5 to 15) in 120 patients (41%), moderate to severe (BL-US=15–60) in 175 patients (45%), and very severe (BL-US>60) in the remaining 56 patients (14%).

A substantial number of patients with moderate to severe lung congestion (71%) were asymptomatic or presented slight symptoms of heart failure. Overall, 213 (55%) patients had cardiovascular (CV) comorbidities, and 114 (30%) patients were in III–IV NYHA class. Data analysis according to BL-US categories showed that patients in the top BL-US score category (>60) were significantly older, with higher C-reactive protein (CRP) and lower albumin. They were more frequently affected by CV comorbidities and more frequently presented severe heart failure (NYHA class III–IV) compared with patients in the other two BL-US categories (Table 1). Furthermore, correlation analysis by considering BL-US score as a discrete variable (Table 1, last column) identified diabetes, diastolic BP, pulse pressure ( $P=0.07$ ), and hemoglobin as significant correlates of this score. In a multiple linear regression model, including all univariate predictors of BL-US ( $P \leq 0.10$ ),

only the NYHA class ( $\beta=0.13$ ,  $P=0.02$ ) and hemoglobin ( $\beta=-0.12$ ,  $P=0.02$ ) maintained an independent association with the BL-US score, whereas sex, CRP, cardiovascular comorbidities, albumin, diastolic BP, age, and diabetes were unassociated with BL-US after multivariate data adjustment (Table 2).

### Ultrasound Lung BL-USs, All-Cause Mortality, and Fatal and Nonfatal CV Events: Cox Regression Analyses

During the follow-up period (median=2.1 years, interquartile range=1.8–2.4), 96 patients died, and 90 patients had incident cardiac events that were fatal in 43 cases. In a Kaplan–Meier survival analysis, the hazard ratio of all-cause mortality increased in close parallelism with the BL-US score, and therefore, the relative risk of mortality was highest in patients with BL-US>60 (hazard ratio [HR]=4.20, 95% CI=2.40–7.20), intermediate in patients with BL-US ranging from 15 to 60 (HR=1.70, 95% CI=1.00–2.80), and lowest in patients with BL-US<15 (HR=1.00, reference group) (Figure 1 and Table 3). The same analysis carried out for cardiac events provided similar results (Figure 1 and Table 3). In multivariate Cox models, BL-US (the criteria for building these models are detailed in the Concise Methods) maintained independent predictive value mortality and cardiac events (Table 3). BL-US was superior to NYHA as a predictor of the study outcomes, because in models including both the BL-US and NYHA class, BL-US rather than NYHA was retained as significant predictor of the study outcomes (Table 3). The independent predictive power of BL-US was consistent across age, sex, diabetes, hypertension, smoking, and background cardiovascular events strata ( $P$  for interaction = NS) (Figure 2). Furthermore, no significant heterogeneity in the effect of BL-US on study outcomes was found among participating centers, and the  $I^2$  value of such an effect was not significant for both all-cause mortality and fatal and nonfatal cardiac events ( $P>0.80$ ), indicating that the HR of the relationship between BL-US and study outcomes was consistent across centers. Multivariate modeling of BL-US as discrete variable provided similar results, and a 10-units increase in BL-US signaled a 6% increase for both mortality (HR=1.06, 95% CI=1.03–1.10,  $P<0.001$ ) and cardiac events (HR=1.06, 95% CI=1.02–1.11,  $P=0.003$ ). Furthermore, the cardiovascular hospitalization rate runs in close parallelism ( $P<0.001$ ) with the BL-US<15: 19 hospitalizations/100 persons-year (95% CI=14.00–25.00); BL-US=15–60: 31 hospitalizations/100 persons-year (95% CI=25.00–38.00; BL-US>60: 50 hospitalizations/100 persons-year (95% CI=35.00–69.00).

### Discrimination, Calibration, and Reclassification Abilities of BL-US

BL-US added modest discrimination ability for mortality to a prediction model based on classic risk factors (age, smoking, CV comorbidities, cholesterol, pulse pressure) and albumin, phosphate, CRP, and NYHA (model with BL-US: area under the receiver operator curve [AUC]=0.78 versus model without

**Table 1.** Main demographic, somatometric, and clinical characteristics in the whole study population and patients divided according to the BL-US

	Whole Group (n=392)	US B-Lines Number			P for Linear Trend	Lung BL-US versus r (P)
		<15 (n=161)	15–60 (n=175)	>60 (n=56)		
Age (yr)	65±15	63±16	66±13	68±13	0.01	0.14 (<0.001)
Body mass index (kg/m <sup>2</sup> )	26±5	26±5	26±5	26±6	0.91	−0.03 (0.60)
Male sex n (%)	247 (63)	93 (58)	116 (66)	38 (68)	0.09	0.08 (0.09)
Current smokers n (%)	164 (42)	57 (35)	83 (47)	24 (43)	0.11	0.03 (0.57)
Past smokers n (%)	36 (9)	14 (9)	17 (10)	5 (9)	0.88	0.07 (0.18)
Patients with diabetes n (%)	110 (29)	40 (26)	50 (29)	20 (36)	0.15	0.10 (0.05)
On anti-hypertensive treatment n (%)	220 (56)	89 (55)	93 (53)	38 (68)	0.25	0.05 (0.36)
Dialysis vintage (mo)	128 (65–258)	130 (66–303)	129 (57–253)	112 (67–222)	0.80	−0.08 (0.13)
With cardiovascular comorbidities n (%)	213 (55)	77 (49)	97 (56)	39 (70)	0.01	0.13 (0.01)
Systolic BP (mmHg)	136±23	135±22	138±23	134±26	0.85	0.01 (0.89)
Diastolic BP (mmHg)	73±12	73±12	73±12	69±14	0.10	−0.13 (0.01)
Pulse pressure (mmHg)	64±19	62±19	65±18	65±21	0.19	0.09 (0.07)
Cholesterol (mg/dl)	151±39	151±41	150±37	150±45	0.77	−0.05 (0.36)
Hemoglobin (g/dl)	11.4±1.4	11.5±1.3	11.4±1.3	11.0±1.6	0.07	−0.14 (0.01)
Albumin (g/dl)	3.9±0.4	4.0±0.3	3.9±0.4	3.8±0.5	0.05	−0.12 (0.02)
CRP (mg/L)	4.5 (3.02–12.8)	3.8 (3.0–7.7)	5.0 (3.0–15.2)	7.9 (3.6–25.5)	0.02	0.17 (<0.001)
Calcium (mg/dl)	8.9±0.9	8.9±0.8	8.9±0.8	9.11±1.3	0.44	0.02 (0.68)
Phosphate (mg/dl)	4.9±1.6	5.0±1.3	4.8±1.7	4.9±1.7	0.42	−0.06 (0.25)
III–IV NYHA class n (%)	114 (30)	37 (24)	50 (29)	27 (51)	0.001	0.19 (<0.001)

Data are expressed as mean ± SD, median and interquartile range, or percent frequency as appropriate.

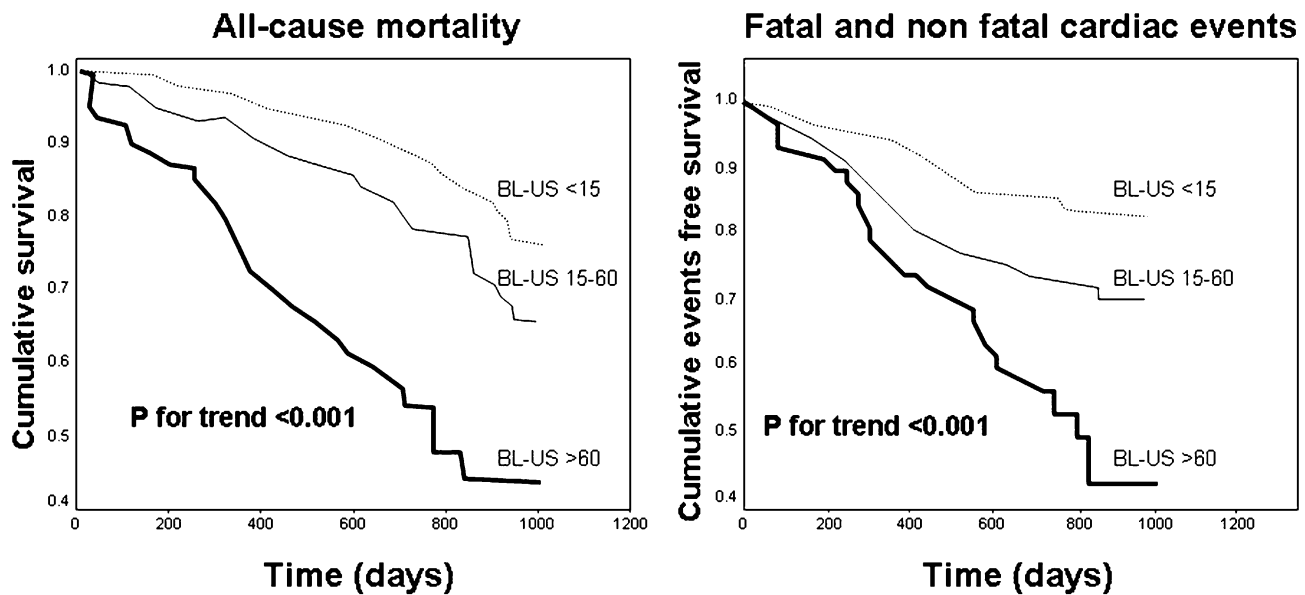
**Table 2.** Multiple linear regression analysis of BL-US

	Standardized Regression Coefficient (β)	P
Hemoglobin	−0.12	0.02
NYHA class (III–IV)	0.12	0.02
Male sex	0.09	0.06
CRP	0.07	0.21
Cardiovascular comorbidities	0.05	0.31
Albumin	−0.05	0.31
Pulse pressure <sup>a</sup>	0.05	0.36
Age	0.05	0.40
Diabetes	0.03	0.50

<sup>a</sup>The inclusion of diastolic BP ( $\beta = -0.10$ ,  $P = 0.06$ ) instead of pulse pressure in the model did not materially affect the strength of the associations between each predictor and the BL-US (data not shown).

BL-US AUC=0.76). The same analysis carried out for fatal and nonfatal cardiac events showed similar results (model with BL-US AUC=0.73 versus model without BL-US AUC=0.69). The Hosmer–Lemeshow test indicated that the prediction models with and without BL-US were well calibrated for both all-cause mortality and fatal and nonfatal cardiac events ( $P > 0.05$ ). Importantly, prognostic models including BL-US increased the explained variation (*i.e.*, an index combining discrimination and calibration) in study outcomes of models based on standard risk factors and NYHA from 24%–30% for all-cause mortality ( $P < 0.001$ ) and from 17%–22% for fatal and nonfatal cardiac events ( $P < 0.001$ ).

In Table 4, patients who died and patients who survived were arranged according to the predicted probability of death as estimated by either a model including classic risk factors and albumin, phosphate, CRP, and NYHA (horizontal rows) or a model including the same risk factors and BL-US (vertical rows). In 6 of 96 patients who died (6%), reclassification was more accurate by using the model including BL-US to predict death. However, 7 of 96 patients who died (7%) moved to a lower risk category. Among those patients who survived, 62 of 296 (21%) patients were reclassified in a lower risk category, and 36 of 296 (12%) patients were reclassified in a higher risk category. Overall, the Net Reclassification Index (NRI) was 7.7%, a figure that just failed to reach statistical significance ( $P = 0.10$ ). When reclassification analysis was applied to fatal and nonfatal cardiac events (Table 4), 9 of 90 patients with cardiac events (10%) were correctly reclassified in a higher risk category for these events by the model including BL-US. However, this result was counterbalanced by an identical number of patients ( $n = 9$ ) who were incorrectly reclassified into a lower risk category (Table 4). Of note, among those patients without cardiac events (Table 4), 63 of 302 (21%) patients were reclassified in a lower risk category, and 33 of 302 (11%) patients were reclassified in a higher risk category, thus providing an NRI of 10%, a figure that was of statistical significance ( $P < 0.02$ ). Additional data analysis of prognostic models performance by the integrated discrimination improvement (IDI) showed that the inclusion of BL-US achieved a 4% IDI for all-cause mortality ( $P < 0.001$ ) and a 3% IDI for fatal and nonfatal cardiac events ( $P = 0.002$ ).



**Figure 1.** Kaplan–Meier survival analyses of all-cause mortality and fatal and nonfatal cardiac events according to the BL-US.

## DISCUSSION

In this study, the degree of lung congestion measured by lung US was a better predictor of the risk of death and cardiac events than symptoms of heart failure as assessed by the NYHA score and provided additional independent information to explain variation in study outcomes over and above classic risk factors, serum albumin, phosphate, CRP, and NYHA score. Furthermore, reclassification analysis showed that the inclusion of estimates of lung congestion by US into a prediction model based on risk factors listed above significantly improves the prediction of cardiac events by the same model by 10%.

### Pulmonary Water and Heart Disease in ESRD

In hemodialysis patients without apparent pulmonary disease, carbon oxide transfer is substantially compromised, denoting subclinical pulmonary edema,<sup>18</sup> and the ventilation/perfusion ratio improves after dialysis, implying reduced extravascular lung water after fluid subtraction.<sup>19</sup> In a study based on a double indicator dilution technique, predialysis lung water was 33% higher in asymptomatic dialysis patients without cardiac disease than in well matched healthy subjects and reverted to normal postdialysis.<sup>20</sup> These observations were subsequently confirmed in another study based on a modified optical density dilution and ultrasound velocity technique.<sup>21</sup> In a feasibility study in 75 patients, we showed that the measurement of pulmonary water by BL-US has good interobservers and interprobes reproducibility.<sup>15</sup> We also found that most patients with moderate to severe lung congestion were asymptomatic,<sup>15</sup> an observation fully confirmed in this larger cohort study. Furthermore, we reported that, both before and after dialysis, BL-US consistently associates with pulmonary

pressure, left atrial volume, and particularly, ejection fraction, implicating LV dysfunction and volume overload in pulmonary congestion in dialysis patients. Thus, lung US detects congestion at a preclinical stage in a substantial proportion of patients, which could be of clinical relevance for the prevention of cardiac events in an elderly population with cardiomyopathy like the hemodialysis population.

### Prognostic Value of Pulmonary Water Measurement by Lung US

Development of biomarkers for application in clinical practice is a complex undertaking that demands proof that the biomarker reliably reflects the targeted biologic process, evidence that the biomarker has diagnostic and/or prognostic ability over and above standard factors, and proper testing in specifically designed trials where the biomarker is face to face compared with established indicators of the same biologic process.

BL-US proved to be a strong and independent predictor of death and incident cardiovascular events<sup>22</sup> in patients with cardiac disease, but whether the BL-US has prognostic power in other conditions is still unknown. Prognostic biomarkers should be specifically investigated in the precise population where they are proposed for clinical application. This process is particularly true in the hemodialysis population, a population with a notoriously high risk for fluid overload. We found that lung US adds significant prognostic information for death and cardiovascular events to classic risk factors, the NYHA score, and powerful risk factors in CKD patients, like hypoalbuminemia, hyperphosphatemia, and inflammation. In quantitative terms, the BL-US score significantly increased by 6% and 5% the explained variation in death rate and cardiovascular events by a model based on the above-mentioned

**Table 3.** Crude and adjusted Cox regression analyses for all-cause mortality and fatal and nonfatal cardiac events

Variables (Units of Increase)	Crude Analysis HR (95% CI) and P Value	Adjusted Analysis HR (95% CI) and P Value
All-cause mortality (n=96)		
BL-US		
<15	1 <sup>a</sup>	1 <sup>a</sup>
15–60	1.68 (1.02–2.76), <i>P</i> =0.04	1.31 (0.79–2.18), <i>P</i> =0.30
>60	4.20 (2.45–7.23), <i>P</i> <0.001	3.04 (1.73–5.35), <i>P</i> <0.001
Age (1 yr)		1.03 (1.01–1.05), <i>P</i> <0.001
Current or past smoking (0=no; 1=yes)		1.66 (1.09–2.54), <i>P</i> =0.02
CV comorbidities (0=no; 1=yes)		1.26 (0.77–2.06), <i>P</i> =0.35
Cholesterol (1 mg/dl)		1.00 (0.99–1.00), <i>P</i> =0.44
NYHA class (0=I-II; 1=III-IV)		1.48 (0.92–2.38), <i>P</i> =0.10
Pulse pressure (1 mmHg) <sup>b</sup>		1.01 (1.00–1.02), <i>P</i> =0.22
Albumin (1 g/dl)		0.74 (0.45–1.21), <i>P</i> =0.23
Phosphate (1 mg/dl)		0.89 (0.77–1.03), <i>P</i> =0.13
CRP (1 mg/L)		1.00 (0.99–1.00), <i>P</i> =0.85
Fatal and nonfatal cardiac events (n=90)		
BL-US		
<15	1 <sup>a</sup>	1 <sup>a</sup>
15–60	1.88 (1.13–3.12), <i>P</i> =0.01	1.59 (0.95–2.65), <i>P</i> =0.08
>60	3.75 (2.12–6.65), <i>P</i> <0.001	3.20 (1.75–5.88), <i>P</i> <0.001
Age (1 yr)		1.02 (1.01–1.04), <i>P</i> =0.01
Male sex		1.15 (0.66–1.99), <i>P</i> =0.62
Current or past smoking (0=no; 1=yes)		1.73 (1.04–2.89), <i>P</i> =0.03
Diabetes (0=no; 1=yes)		0.95 (0.58–1.53), <i>P</i> =0.82
Dialysis vintage (10 mo)		1.00 (0.99–1.01), <i>P</i> =47.00
CV comorbidities (0=no; 1=yes)		1.92 (1.16–3.15), <i>P</i> =0.01
Pulse pressure (1 mmHg) <sup>b</sup>		1.00 (0.99–1.01), <i>P</i> =0.41
NYHA class (0=I-II; 1=III-IV)		0.88 (0.53–1.45), <i>P</i> =0.64

Multiple Cox regression model included all variables that were associated with study outcomes with *P*<0.10 at univariate analyses. The criteria for building these models are further detailed in Concise Methods. Data are expressed as HR, 95% CI, and *P* values.

<sup>a</sup>Reference group.

<sup>b</sup>The inclusion of diastolic or systolic BPs instead of pulse pressure as well as the inclusion of current smoking instead of current or past smoking into the Cox models did not materially affect the strength of the associations of each predictor and the occurrence of study outcomes (data not shown).

risk factors. This result indicates that this biomarker improves the combined discrimination ability and calibration of the same model. Although the discrimination gain portended by the BL-US score was minuscule for both study outcomes, the application of this score significantly improved by 10% the reclassification of the risk for cardiac events in patients who remained free cardiovascular events. Similarly, risk reclassification in survivors improved by 7.7%, a not trivial increase, but this improvement failed to reach formal statistical significance (*P*=0.10). Furthermore, an analysis by the Integrated Discrimination Improvement (IDI; a cutoff-free index of performance of a prognostic model) showed that the inclusion of BL-US achieved a 4% IDI for all-cause mortality (*P*<0.001) and a 3% IDI for fatal and nonfatal cardiac events (*P*=0.002). Overall, our data show that the application of lung US may help to refine prognosis and that it adds meaningful specificity to prediction models based on classic and kidney failure-related risk factors in dialysis patients.

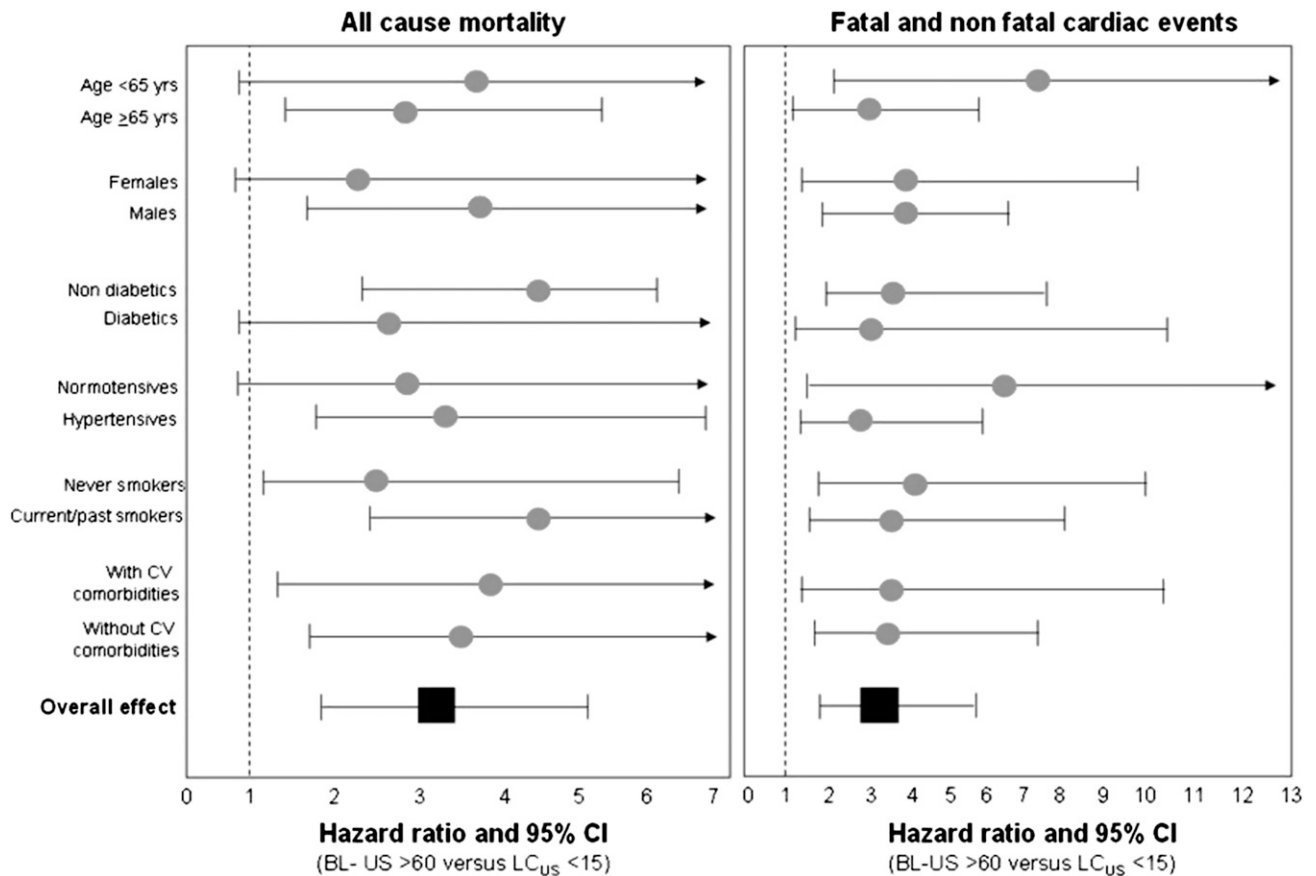
Our study has limitations. Although the study was multicenter and fairly large, our cohort was gathered in a limited geographical area in southern Italy. Average mortality of dialysis patients in this area is very close to the average figure in European countries.<sup>23</sup> Furthermore, our population was composed of patients of Caucasian descent only. Therefore, the prognostic ability of lung US should be confirmed in other dialysis populations, including a larger share of other ethnicities. Finally, the usefulness of lung US remains to be tested in a formal clinical trial. A trial designed by the European Cardiovascular and Renal Medicine working group of the European Renal Association—European Dialysis Transplantation Association has recently been funded by the same society ([http://www.era-edta.org/dati/pagine/allegato\\_201112122456.pdf](http://www.era-edta.org/dati/pagine/allegato_201112122456.pdf); [http://www.era-edta.org/privata/images/LUST\\_\(Zoccali\)\\_final\\_application.pdf](http://www.era-edta.org/privata/images/LUST_(Zoccali)_final_application.pdf)).

## CONCISE METHODS

The study protocol was approved by the ethical committee at our institution, and informed consent was obtained from each participant.

## Patients

From an original population of 462 hemodialysis patients, all of Caucasian descent, forming the whole population of 11 dialysis units in two regions in southern Italy (Calabria and Sicily), a cohort of 392 hemodialysis patients was available for the data analysis (Results). All patients had been on regular hemodialysis with standard bicarbonate dialysis for a median time of 126 months (interquartile range=63–256 months) and were being treated with noncellulosic membrane filters of various type; 220 patients were treated with various antihypertensive drugs (118 on monotherapy with angiotensin converting enzyme inhibitors, calcium channel blockers,  $\alpha$ - and  $\beta$ -blockers, vasodilators, diuretics, or other drugs, 71 patients on double therapy, 23 patients on triple therapy, and 8 patients on quadruple or quintuple therapy with various combinations of these drugs). All participating Renal Units adhered to recommendations by the European Renal Association—European Dialysis Transplantation Association guidelines for dialysis dose prescription and fluid volume control.<sup>24</sup> The main demographic, somatometric, clinical,



**Figure 2.** HRs (and 95% CIs) for all-cause mortality and fatal and nonfatal cardiac events of patients with BL-US>60 versus patients with BL-US<15 (reference group) according to the presence/absence of advanced age (>65 years), sex, diabetes, hypertension, smoking (current/past versus never smokers), and background CV comorbidities. Data were derived by Cox regression analyses fitted according to the presence/absence of each risk factor.

and biochemical characteristics of the study population are detailed in Table 1.

**Laboratory Measurements**

Blood sampling was performed after an overnight fast always during a midweek hemodialysis day (brief interval). Blood was drawn and put into tubes containing EDTA, and plasma supernatants were stored at -80°C until batch analyses. Serum cholesterol, albumin, calcium, phosphate, CRP, and hemoglobin measurements were made using standard methods in the routine clinical laboratory.

**Clinical Assessment of Heart Failure**

Patients were classified as symptomatic or asymptomatic on the basis of the NYHA scale,<sup>25</sup> a scoring system that was also validated in dialysis patients.<sup>26</sup> For the purpose of this study, patients were grouped just in two classes, the first group including NYHA I-II (70%) and the second group including NYHA III-IV (30%).

**B-Lines Detection and BL-US Score**

All measurements were performed by nephrologists of participating centers. Before the study, nephrologists had brief (2-3 hours)

structured training<sup>27</sup> on BL-US measurement at the coordinating center. After training, all of them reached an adequate competence on the application of lung US. In fact, in preliminary blind tests administered in unselected patients, the estimates of BL-US by nephrologists did not differ ( $\pm 10\%$ ) from estimates by the lung US technical expert at the coordinating center (R.T.). All lung US assessments were made by these nephrologists immediately before dialysis. The method is described elsewhere,<sup>15</sup> and more details are available in a 2-minute movie on YouTube ([http://www.youtube.com/watch?v=7y\\_hUFBHStM](http://www.youtube.com/watch?v=7y_hUFBHStM)). All measurements were made by an observer unaware of clinical data. BL-US has a high interobserver and interprobes reliability (concordance indexes=0.96 and 0.99, respectively).<sup>15</sup>

**Follow-Up Study**

After the initial assessment, patients were followed up for a median time of 2.1 years (interquartile range=1.8-2.4 years). During the follow-up period, causes of death and cardiovascular events were collected. The study end points were mortality and fatal and nonfatal cardiac events. Cardiac events were (1) myocardial infarction adjudicated on the basis of serial changes of electrocardiogram (ECG), creatine-kinase, and troponin, (2) ECG-documented angina

**Table 4.** Reclassification ability of prediction models with and without BL-US for all-cause mortality and fatal and nonfatal cardiac events

Model Including Standard Risk Factors Only	Model Including Standard Risk Factors and BL-US		
	<10%	10%–20%	>20%
<b>Mortality</b>			
Patients who died (n=96)			
<10%	4	3	0
10%–20%	3	6	3
>20%	0	4	73
Patients who survived (n=296)			
<10%	71	11	2
10%–20%	28	34	23
>20%	0	34	93
<b>Fatal and nonfatal cardiac events</b>			
Patients with fatal and nonfatal cardiac events (n=90)			
<10%	1	2	0
10%–20%	2	10	7
>20%	0	7	61
Patients without fatal and nonfatal cardiac events (n=302)			
<10%	43	10	0
10%–20%	30	55	23
>20%	0	33	108

For both all-cause mortality and fatal and nonfatal cardiac outcomes, patients were divided according to the occurrence of the event of interest. Patients who died and patients who survived as well as patients with and without fatal and nonfatal cardiac events were divided in three groups according to the predicted probability of the event of interest (<10%, 20%–20%, and >20%) estimated by either a model including standard risk factors (horizontal rows) or a model including the same risk factors and BL-US (vertical rows; more details in Results).

episodes, (3) heart failure, (4) ECG-documented arrhythmia, (5) pulmonary embolism, and (6) unexpected sudden death highly suspected as of cardiac origin. Each death was independently reviewed and assigned an underlying cause by a panel of three physicians kept blind to lung US results, and discrepancies among assessors were resolved by consensus.

### Statistical Analyses

Comparisons among groups were made by one-way ANOVA, Kruskal–Wallis, or chi-squared test as appropriate. Association between variables was tested by bivariate and multiple regression analysis.

The prognostic value of BL-US for predicting the study outcomes was investigated by the Kaplan–Meier analysis and Cox regression analysis. Categorization of pulmonary congestion by BL-US was done by analyzing the Martingale residuals<sup>28</sup> in Cox's regression analysis. By this analysis, we found that the categorization of BL-US into three categories (<15, 15–60, and >60) was the best for modeling the relationship between this variable and the incidence rate of study outcomes. In multivariate Cox models, we included all variables that correlated to the study outcomes with  $P \leq 0.10$  at univariate Cox analyses. Tested covariates included traditional risk factors (age, sex, current/past smoking, diabetes, cardiovascular comorbidities, cholesterol, and arterial pressure), body mass index, antihypertensive treatment, NYHA class, risk factors related to CKD-5D (dialysis vintage, hemoglobin, albumin, calcium, and phosphate),

and CRP. The additional prognostic value of BL-US for study outcomes above and beyond that provided by standard risk factors and NYHA class (basic models) was investigated by assessing the discrimination,<sup>29</sup> calibration, and reclassification abilities (that is, by calculating the NRI and IDI) of BL-US.<sup>30,31</sup> The explained variation in the incidence rate of study outcomes (*i.e.*, an index combining discrimination and calibration) was calculated by  $-2 \log$  likelihood statistics. The heterogeneity in the effect of BL-US for all-cause mortality and fatal and nonfatal cardiac events among centers participating into the study was investigated by a meta-analytic approach by calculating the  $I^2$  and the corresponding  $P$  value.<sup>32</sup>

### ACKNOWLEDGMENTS

This study was supported by grants from Regione Calabria Department of Health.

Persons named in the acknowledgements declare that no conflict of interest is related to this manuscript. No funding was received by private industries. On behalf of all co-authors and persons named in the ac-

knowledgements, I certify that no conflict of interest is related to this manuscript. I received permission from all persons named in the acknowledgements. The paper was not published before in any language, and it is not under consideration for publication elsewhere. It was not presented before in abstract form. Hereby, I certify that I had full access to all the data in the study and take responsibility for the integrity of the data and the accuracy of the data analysis.

Lung US in CKD Working Group: Giovanni Alati (Servizio Dialisi Ospedale di Tropea), Rosalia Boito and Rosita Lucà, (Divisione di Nefrologia e Dialisi Ospedale “S. Giovanni di Dio,” Crotona), Graziella Bonanno (“Azzurra” Ambulatorio Medico Nefrologico e Tecniche Dialitiche, Catania), Simonetta Cassani (Divisione di Nefrologia e Dialisi CAL Ospedale Mariano Santo Cosenza), Antonio Chippari and Teresa Cicchetti (Divisione di Nefrologia e Dialisi Ospedale “Giannettasio” Rossano), Anna Clementi and Maurizio Garozzo (U.O. di Nefrologia e Dialisi Ospedale S. Marta e S. Venera Acireale), Domenico Lo gozzo (Servizio Dialisi di Aciri), Domenico Mancuso and Francesco Mollica (U.O. di Nefrologia, Dialisi e Trapianto, Ospedale Annunziata, Cosenza), Giuseppe Natale (Servizio Nefrologia e Dialisi Ospedale “Jazzolino” Vibo Valentia), Vincenzo Panuccio (UO di Nefrologia e Dialisi di Reggio Calabria), and Arcangelo Sellaro (Centro Dialisi ASL 5 Mesoraca).

### DISCLOSURES

None.

## REFERENCES

1. Mees EJ: Volaemia and blood pressure in renal failure: Have old truths been forgotten? *Nephrol Dial Transplant* 10: 1297–1298, 1995
2. Kalantar-Zadeh K, Regidor DL, Kovesdy CP, Van Wyck D, Bunnapradist S, Horwich TB, Fonarow GC: Fluid retention is associated with cardiovascular mortality in patients undergoing long-term hemodialysis. *Circulation* 119: 671–679, 2009
3. Wizemann V, Wabel P, Chamney P, Zaluska W, Moissl U, Rode C, Malecka-Masalska T, Marcelli D: The mortality risk of overhydration in haemodialysis patients. *Nephrol Dial Transplant* 24: 1574–1579, 2009
4. Agarwal R: Hypervolemia is associated with increased mortality among hemodialysis patients. *Hypertension* 56: 512–517, 2010
5. Moissl UM, Wabel P, Chamney PW, Bosaeus I, Levin NW, Bosy-Westphal A, Korth O, Müller MJ, Ellegård L, Malmros V, Kaitwatcharachai C, Kuhlmann MK, Zhu F, Fuller NJ: Body fluid volume determination via body composition spectroscopy in health and disease. *Physiol Meas* 27: 921–933, 2006
6. Charra B: Fluid balance, dry weight, and blood pressure in dialysis. *Hemodial Int* 11: 21–31, 2007
7. Parfrey PS, Foley RN, Harnett JD, Kent GM, Murray DC, Barre PE: Outcome and risk factors for left ventricular disorders in chronic uraemia. *Nephrol Dial Transplant* 11: 1277–1285, 1996
8. Staub NC: Pulmonary edema. *Physiol Rev* 54: 678–811, 1974
9. McGee WT, Mailloux P, Jodka P, Thomas J: The pulmonary artery catheter in critical care. *Semin Dial* 19: 480–491, 2006
10. Picano E, Gargani L, Gheorghide M: Why, when, and how to assess pulmonary congestion in heart failure: Pathophysiological, clinical, and methodological implications. *Heart Fail Rev* 15: 63–72, 2010
11. Lichtenstein DA, Mezière GA: Relevance of lung ultrasound in the diagnosis of acute respiratory failure: The BLUE protocol. *Chest* 134: 117–125, 2008
12. Picano E, Frassi F, Agricola E, Gligorova S, Gargani L, Mottola G: Ultrasound lung comets: A clinically useful sign of extravascular lung water. *J Am Soc Echocardiogr* 19: 356–363, 2006
13. Volpicelli G, Elbarbary M, Blaivas M, Lichtenstein DA, Mathis G, Kirkpatrick AW, Melniker L, Gargani L, Noble VE, Via G, Dean A, Tsung JW, Soldati G, Copetti R, Bouhemad B, Reissig A, Agricola E, Roubey JJ, Arbelot C, Liteplo A, Sargsyan A, Silva F, Hoppmann R, Breikreutz R, Seibel A, Neri L, Storti E, Petrovic T; International Liaison Committee on Lung Ultrasound (ILC-LUS) for International Consensus Conference on Lung Ultrasound (ICC-LUS): International evidence-based recommendations for point-of-care lung ultrasound. *Intensive Care Med* 38: 577–591, 2012
14. Agricola E, Bove T, Oppizzi M, Marino G, Zangrillo A, Margonato A, Picano E: “Ultrasound comet-tail images”: A marker of pulmonary edema: A comparative study with wedge pressure and extravascular lung water. *Chest* 127: 1690–1695, 2005
15. Mallamaci F, Benedetto FA, Tripepi R, Rastelli S, Castellino P, Tripepi G, Picano E, Zoccali C: Detection of pulmonary congestion by chest ultrasound in dialysis patients. *JACC Cardiovasc Imaging* 3: 586–594, 2010
16. Noble VE, Murray AF, Capp R, Sylvia-Reardon MH, Steele DJ, Liteplo A: Ultrasound assessment for extravascular lung water in patients undergoing hemodialysis. Time course for resolution. *Chest* 135: 1433–1439, 2009
17. Panuccio V, Enia G, Tripepi R, Torino C, Garozzo M, Battaglia GG, Marcantoni C, Infantone L, Giordano G, De Giorgi ML, Lupia M, Bruzzese V, Zoccali C: Chest ultrasound and hidden lung congestion in peritoneal dialysis patients. *Nephrol Dial Transplant* 27: 3601–3605, 2012
18. Bedetti G, Gargani L, Sicari R, Gianfaldoni ML, Molinaro S, Picano E: Comparison of prognostic value of echographic [corrected] risk score with the Thrombolysis in Myocardial Infarction (TIMI) and Global Registry in Acute Coronary Events (GRACE) risk scores in acute coronary syndrome. *Am J Cardiol* 106: 1709–1716, 2010
19. Romaldini H, Rodriguez-Roisin R, Lopez FA, Ziegler TW, Bencowitz HZ, Wagner PD: The mechanisms of arterial hypoxemia during hemodialysis. *Am Rev Respir Dis* 129: 780–784, 1984
20. Wallin CJ, Jacobson SH, Leksell LG: Subclinical pulmonary oedema and intermittent haemodialysis. *Nephrol Dial Transplant* 11: 2269–2275, 1996
21. MacRae JM, Joseph G, Kislukhin V, Krivitski NM, Heidenheim AP, Lindsay RM: Determining lung water volume in stable hemodialysis patients. *ASAIO J* 52: 430–437, 2006
22. Frassi F, Gargani L, Tesorio P, Raciti M, Mottola G, Picano E: Prognostic value of extravascular lung water assessed with ultrasound lung comets by chest sonography in patients with dyspnea and/or chest pain. *J Card Fail* 13: 830–835, 2007
23. Registry ERA-EDTA: 2009 Report, Italy, Calabria, 2009. Available at: <http://www.rc.ibim.cnr.it/Registro/survival%20report%202009%20Calabria.pdf>. Accessed August 14, 2012
24. Tattersall J, Martin-Malo A, Pedrini L, Basci A, Canaud B, Fouque D, Haage P, Konner K, Kooman J, Pizzarelli F, Tordoir J, Vennegoor M, Wanner C, ter Wee P, Vanholder R: EBP guideline on dialysis strategies. *Nephrol Dial Transplant* 22[Suppl 2]: ii5–ii21, 2007
25. Hurst JW, Morris DC, Alexander RW: The use of the New York Heart Association’s classification of cardiovascular disease as part of the patient’s complete Problem List. *Clin Cardiol* 22: 385–390, 1999
26. Postorino M, Marino C, Tripepi G, Zoccali C; Calabrian Registry of Dialysis and Transplantation: Prognostic value of the New York Heart Association classification in end-stage renal disease. *Nephrol Dial Transplant* 22: 1377–1382, 2007
27. Bedetti G, Gargani L, Corbisiero A, Frassi F, Poggianti E, Mottola G: Evaluation of ultrasound lung comets by hand-held echocardiography. *Cardiovasc Ultrasound* 4: 34, 2006
28. Grambsch PM, Therneau TM, Fleming TR: Diagnostic plots to reveal functional form for covariates in multiplicative intensity models. *Biometrics* 51: 1469–1482, 1995
29. Tripepi G, Jager KJ, Dekker FW, Zoccali C: Statistical methods for the assessment of prognostic biomarkers (Part I): Discrimination. *Nephrol Dial Transplant* 25: 1399–1401, 2010
30. Tripepi G, Jager KJ, Dekker FW, Zoccali C: Statistical methods for the assessment of prognostic biomarkers(part II): Calibration and reclassification. *Nephrol Dial Transplant* 25: 1402–1405, 2010
31. Pencina MJ, D’Agostino RB Sr, D’Agostino RB Jr, Vasan RS: Evaluating the added predictive ability of a new marker: From area under the ROC curve to reclassification and beyond. *Stat Med* 27: 157–172, discussion 207–212, 2008
32. Higgins JPT, Thompson SG: Quantifying heterogeneity in a meta-analysis. *Stat Med* 21: 1539–1558, 2002