

Caution in Identifying Coronaviruses by Electron Microscopy

We are concerned about the erroneous identification of coronavirus directly in tissues by authors using electron microscopy. Several recent articles have been published that purport to have identified severe acute respiratory syndrome coronavirus 2 (SARS-CoV-2) directly in tissue.^{1–4} Most describe particles that resemble, but do not have the appearance of, coronaviruses.^{5–7}

The evidence provided in the article by Farkash *et al.*⁸ in *JASN* likewise does not confirm the presence of SARS-CoV-2 in kidney tissue. Coronaviruses have been carefully described in electron microscopic images of thin sections.^{9–12} In these images of thin sections, coronaviruses appear as spherical structures containing black dots on the inside, which are cross-sections through the helical viral nucleocapsid (Figure 1). Coronaviruses receive their outer covering by budding into cellular membranes of the rough endoplasmic reticulum and Golgi complex forming a vacuole and are found in the intracisternal space. The spikes are seen with difficulty in thin sections of infected cells, but a “fuzz” is sometimes visible. However, note that these spikes face the inside of the vacuole and do not touch the cytoplasm of the cell. Complete virus particles can also be found at the cell surface, having been extruded when the vacuolar membrane fuses with the plasma membrane and exocytoses them; in this case, the spikes on the virions face the extracellular space, again, not the cytoplasm.

In the article by Farkash *et al.*,⁸ the electron microscopic images in their Figure 3, A–C do not demonstrate coronaviruses. Rather, the structures described as virus are clathrin-coated vesicles (CCVs), normal subcellular organelles involved in intracellular transport. Figure 3A⁸ is a low magnification of a dying cell with nonspecific disorganized cytoplasm with an arrow pointing to an aggregation of CCVs. Panels B and C in their Figure 3⁸ show clusters of CCVs, and the inset for Figure 3C⁸ shows a higher magnification. None of these spherical structures contain cross-sections through the nucleocapsid of virus particles. In addition, these CCVs are seen free in the cytoplasm, whereas coronavirus particles are found enclosed within a vacuole so that the spikes face the inside of the vacuolar contents, not the cytoplasm. Figure 3D⁸ contains a multivesicular body

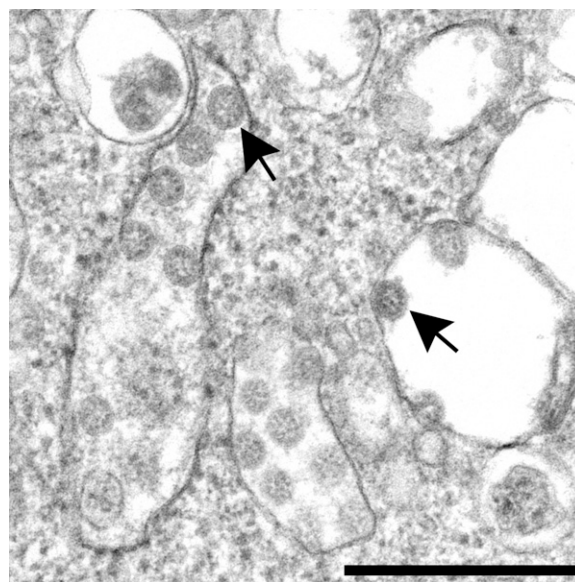


Figure 1. Severe acute respiratory syndrome coronavirus 2 isolate grown in cell culture showing numerous spherical viral particles (arrows) that are in the cisternae of the rough endoplasmic reticulum/Golgi complex area of the cell. Note the black dots on the interior of the particles, which are cross-sections through the viral nucleocapsid. Scale bar: 400 nm.

(MVB), which they have likened to double-membrane vesicles, the replication complex for coronaviruses. The structure shown in the manuscript by Farkash *et al.*⁸ does not have the two tightly opposed membranes seen in double-membrane vesicles and does not have the appearance of what is shown in the reference they cite.¹³ In addition, MVBs can be found in kidney tissues observed historically.⁶ Moreover, MVBs are formed by invaginations of endosomes and are intermediates in trafficking for lysosomes.

Additionally, Farkash *et al.*⁸ document their findings by referring to an article by Su *et al.*² that purports to have identified coronavirus in kidney. Likewise, that article shows only normal cell structures that, to the non-electron microscopist virologist, may resemble coronavirus. Their interpretation has been refuted in Letters to the Editor of *Kidney International*.^{5,6}

Identification of viruses is not always straight forward. Consideration should be given to the mechanism of virus production, including the location inside of cells, as well as the appearance (size, shape, internal pattern of the nucleocapsid, and surface spikes).^{14–16} Care should be taken to prevent mistaking cell organelles for viral particles.^{17,18}

Published online ahead of print. Publication date available at www.jasn.org.

Correspondence: Dr. Sara E. Miller, Department of Pathology, Duke University Medical Center, Durham, NC 27710. Email: saram@duke.edu

Copyright © 2020 by the American Society of Nephrology

DISCLOSURES

All authors have nothing to disclose.

FUNDING

None.

ACKNOWLEDGMENTS

We are grateful to Dr. Roosecelis Brasil Martines and Dr. David Howell for critically reviewing the letter.

The findings and conclusions are those of the authors and do not necessarily represent the position of the US Centers for Disease Control and Prevention.

REFERENCES

- Kissling S, Rotman S, Gerber C, Halfon M, Lamoth F, Comte D, et al.: Collapsing glomerulopathy in a COVID-19 patient. *Kidney Int* 98: 228–231, 2020
- Su H, Yang M, Wan C, YiL-X, Tang F, ZhuH-Y, et al.: Renal histopathological analysis of 26 postmortem findings of patients with COVID-19 in China. *Kidney Int* 98: 219–227, 2020
- Varga Z, Flammer AJ, Steiger P, Haberecker M, Andermatt R, Zinkernagel AS, et al.: Endothelial cell infection and endotheliitis in COVID-19. *Lancet* 395: 1417–1418, 2020
- Tavazzi G, Pellegrini C, Maurelli M, Belliato M, Sciutti F, Bottazzi A, et al.: Myocardial localization of coronavirus in COVID-19 cardiogenic shock. *Eur J Heart Fail* 22: 911–915, 2020
- Miller SE, Brealey JK: Visualization of putative coronavirus in kidney. *Kidney Int* 98: 231–232, 2020
- Calomeni E, Satoskar A, Ayoub I, Brodsky S, Rovin BH, Nadasdy T: Multivesicular bodies mimicking SARS-CoV-2 in patients without COVID-19. *Kidney Int* 98: 233–234, 2020
- Goldsmith CS, Miller SE, Martines RB, Bullock HA, Zaki SR: Electron microscopy of SARS-CoV-2: A challenging task. *Lancet* 395: e99, 2020
- Farkash EA, Wilson AM, Jentzen JM: Ultrastructural evidence for direct renal infection with SARS-CoV-2 [published online ahead of print May 5, 2020]. *J Am Soc Nephrol* doi:10.1681/ASN.2020040432
- Dubois-Dalcq M, Holmes KV, Rentier B: Assembly of coronaviridae. In: *Assembly of Enveloped RNA Viruses*, edited by Dubois-Dalcq M, Holmes KV, Rentier B, Vienna, Austria, Springer-Verlag, 1984, pp 100–119
- Oshiro LS, Schieble JH, Lennette EH: Electron microscopic studies of coronavirus. *J Gen Virol* 12: 161–168, 1971
- Goldsmith CS, Tatti KM, Ksiazek TG, Rollin PE, Comer JA, Lee WW, et al.: Ultrastructural characterization of SARS coronavirus. *Emerg Infect Dis* 10: 320–326, 2004
- Zaki SR, Goldsmith CS: SARS coronavirus infection: Pathology and pathogenesis of an emerging virus disease. In: *Coronaviruses with Special Emphasis on First Insights Concerning SARS*, edited by Schmidt A, Weber O, Wolff MH, Basel, Switzerland, Birkhäuser Verlag, 2005, pp 87–99
- Knoops K, Kikkert M, Worm SH, Zevenhoven-Dobbe JC, van der Meer Y, Koster AJ, et al.: SARS-coronavirus replication is supported by a reticulovesicular network of modified endoplasmic reticulum. *PLoS Biol* 6: e226, 2008
- Dalton AJ, Haguenu F, editors: *Ultrastructure of Animal Viruses and Bacteriophages*, Waltham, MA, Academic Press, 1973
- Miller SE: Detection and identification of viruses by electron microscopy. *J Electron Microscop Tech* 4: 265–301, 1986
- Miller SE: Diagnosis of viral infection by electron microscopy. In: *Diagnostic Procedures for Viral, Rickettsial and Chlamydial Infections*, edited by Lennette EH, Lennette DA, Lennette ET, Washington, DC, American Public Health Association, 1995, pp 35–76
- Miller SE: Problems and pitfalls in diagnostic electron microscopy. *Microsc Microanal* 18[Suppl 2]: 172–173, 2012
- Haguenu F: Virus-like particles as observed with the electron microscope. In: *Ultrastructure of Animal Viruses and Bacteriophages*, edited by Dalton AJ, Haguenu F, Waltham, MA, Academic Press, 1973, pp 391–397

See related Letters to the Editor, "Kidney Involvement in COVID-19: Need for Better Definitions," and "Authors' Reply," on pages 2224–2225 and 2225–2226, respectively.

Sarah E. Miller¹ and Cynthia S. Goldsmith²

¹Department of Pathology, Duke University Medical Center, Durham, North Carolina

²Infectious Diseases Pathology Branch, Centers for Disease Control and Prevention, Atlanta, Georgia

JASN 31: 2223–2224, 2020.

doi: <https://doi.org/10.1681/ASN.2020050755>

Kidney Involvement in COVID-19: Need for Better Definitions

Since the severe acute respiratory syndrome coronavirus 2 (SARS-CoV-2) virus outbreak in China at the end of 2019, increasing interest emerged regarding renal involvement during coronavirus disease 2019 (COVID-19). AKI with or without proteinuria is described in a variable percentage of patients with COVID-19, and several reports outlined an increased mortality risk in those with AKI.

The mechanisms of renal injury during COVID-19 are difficult to study due to the interference of several coexisting factors, such as polypharmacy, hypoxia, and cytokine storm. Just like severe acute respiratory syndrome coronavirus, SARS-CoV-2 virus entry into target cells is facilitated by the presence of angiotensin-converting enzyme 2 (ACE2) expressed in respiratory cells as well as renal tubular cells and podocytes, making the hypothesis of a direct renal infection particularly intriguing.

Farkash *et al.*¹ observed renal tubular vacuolization and virus-like inclusions in tubular cells by electron microscopy (EM) in the autopsy of a patient with COVID-19. Similar EM findings together with suggestive immunohistochemical stain for SARS-CoV-2 proteins in tubules were shown in a few patients from two independent Chinese COVID-19 autopsy

Published online ahead of print. Publication date available at www.jasn.org.

Correspondence: Dr. Marco Delsante, Medicina e Chirurgia, Università degli Studi di Parma, Via Gramsci 14, 43121 Parma, Emilia-Romagna, Italy. Email: delsantem@gmail.com

Copyright © 2020 by the American Society of Nephrology