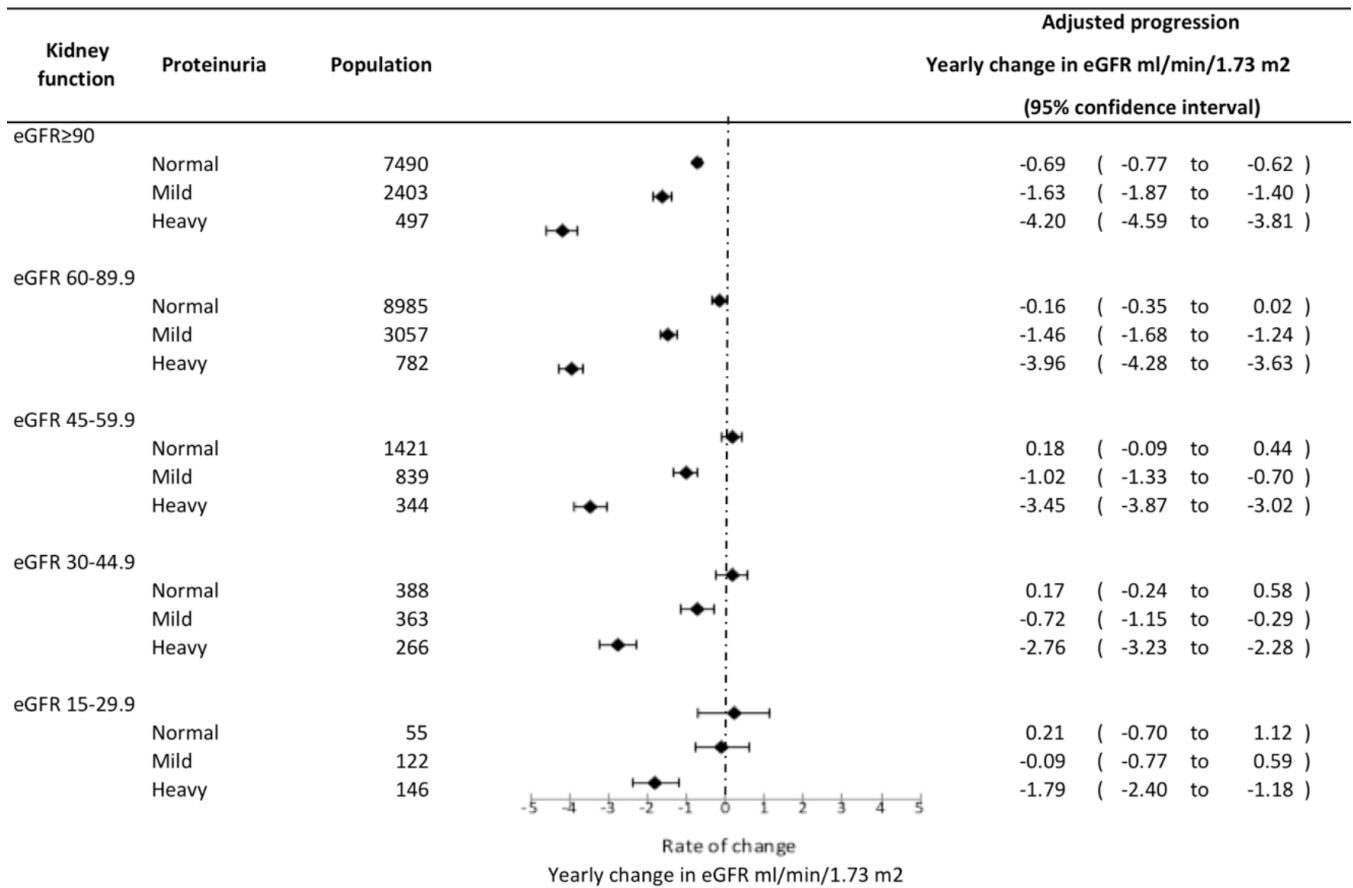


**Appendix Figure 1 - Adjusted change in eGFR ml/min/1.73 m<sup>2</sup> per year across categories of proteinuria measured by albumin:creatinine ratio for men with diabetes mellitus.** Squares and horizontal bars represent the estimates and 95% CIs respectively for multivariate adjusted rate of change in eGFR levels of participants for various levels of kidney function status and proteinuria.



**Appendix Figure 2 - Adjusted change in eGFR ml/min/1.73 m<sup>2</sup> per year across categories of proteinuria measured by albumin:creatinine ratio for women with diabetes mellitus.**

Squares and horizontal bars represent the estimates and 95% CIs respectively for multivariate adjusted rate of change in eGFR levels of participants for various levels of kidney function status and proteinuria.

