

**Supplementary Materials for
Implementation of Early Initiation of Renal Replacement
Therapy in Critically Ill Patients with Acute Kidney Injury:
Impact on Long Term Clinical Outcomes.**

Table of contents

Content	Page
Supplementary Tables	
eTable S1: Causes of mortality	2
eTable S2: Perioperative data of patients <80 years and > 80 years	3
eTable S3: Proportion of patients with available cytokine measurements	5
Supplementary Figures	
eFigure S1: Kaplan-Meier analysis of patients who survived the first 90 days	6

Supplementary Tables

eTable S1: Causes of mortality

	Early, n (%)	Delayed, n (%)	p-value
Refractory septic shock	5/56 (8.9)	5/83 (6.0)	0.516
Multiple Organ Dysfunction Syndrome	12/56 (21.4)	32/83 (38.6)	0.033
Myocardial dysfunction	10/56 (17.9)	10/83 (12.0)	0.339
Others (stroke, bleeding)	13/56 (23.2)	14/83 (16.9)	0.354
Underlying disease	16/56 (28.6)	22/83 (26.5)	0.789

eTable S2: Perioperative data of patients <80 years and > 80 years

		Age ≤80 years (n=206)	Age >80 years (n=25)	p-value
Heart insufficiency		86 (41.75%)	10 (40.00%)	0.8670
Cardiac arrhythmias		76 (36.89%)	14 (56.00%)	0.0643
Valvular disease		74 (35.92%)	14 (56.00%)	0.0509
Arterial hypertension		165 (80.10%)	24 (96.00%)	0.0556
Thrombosis		15 (7.28%)	2 (8.00%)	1.0000
Pulmonary embolism		8 (3.88%)	2 (8.00%)	0.2956
Diabetes		40 (19.42%)	5 (20.00%)	1.0000
COPD		40 (19.42%)	1 (4.00%)	0.0910
Asthma bronchiale		6 (2.91%)	2 (8.00%)	0.2100
Emphysema		2 (0.97%)	0 (0.00%)	1.0000
Cerebral haemorrhage		1 (0.49%)	0 (0.00%)	1.0000
Stroke		27 (13.11%)	4 (16.00%)	0.7548
Liver disease		31 (15.05%)	0 (0.00%)	0.0309
Pancreatitis		3 (1.46%)	0 (0.00%)	1.0000
Alcohol abuse		25 (12.14%)	0 (0.00%)	0.0852
Autoimmune disease		18 (8.74%)	1 (4.00%)	0.7021
History of rectal resection		22 (10.68%)	1 (4.00%)	0.4825
Coagulopathy		12 (5.83%)	0 (0.00%)	0.3717
Source of admission	cardiac	99 (48.06%)	9 (36.00%)	0.0124
	pulmonary	12 (5.83%)	0 (0.00%)	
	trauma	21 (10.19%)	7 (28.00%)	
	neuro	5 (2.43%)	0 (0.00%)	

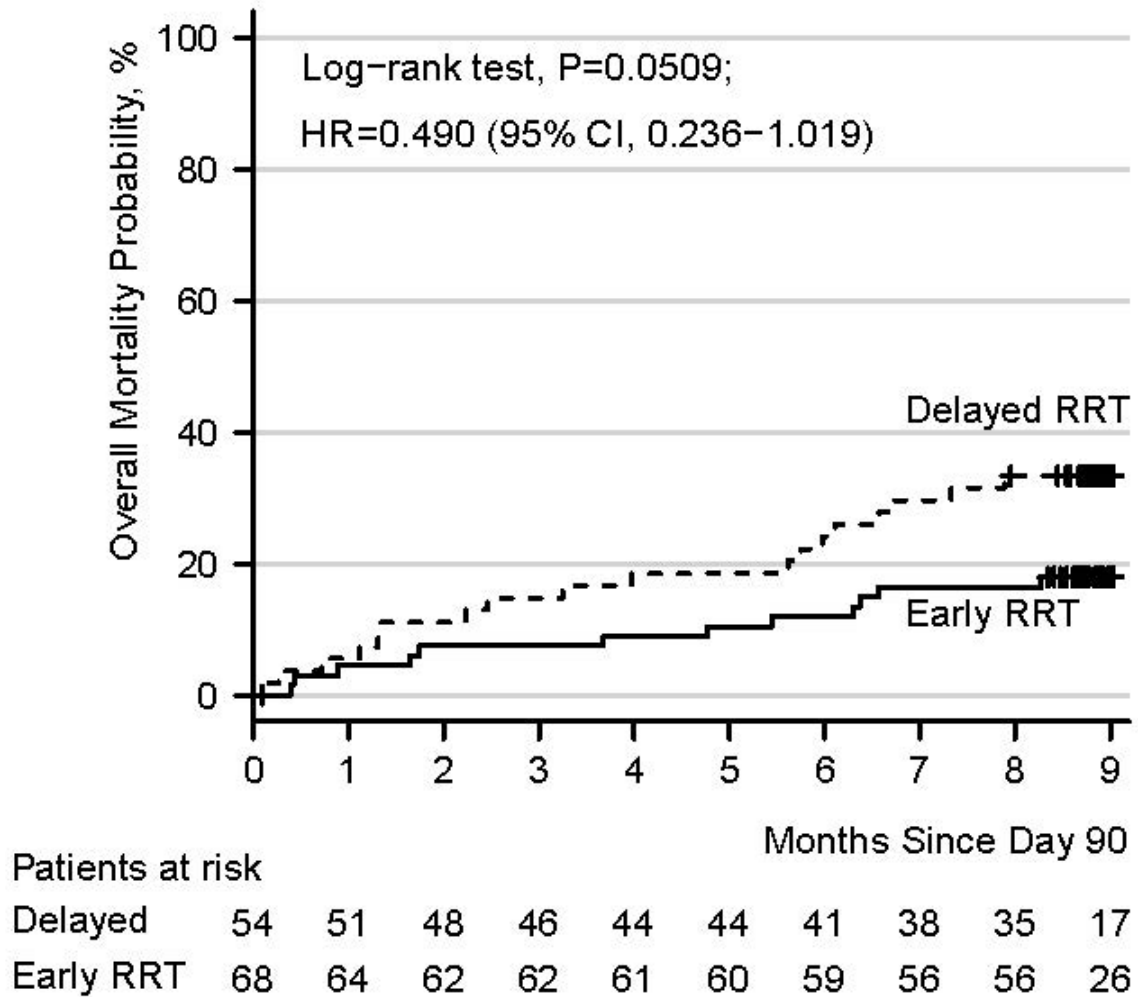
	septic	10 (4.85%)	4 (16.00%)	
	other organs	58 (28.16%)	4 (16.00%)	
	multiple	1 (0.49%)	1 (4.00%)	
Plasma NGAL		634.3 ± 354.5	774.2 ± 356.7	0.0737
APACHE II		25.9320 ± 7.6263	27.1600 ± 7.7872	0.4614

eTable S3: Proportion of patients with available cytokine measurements

	Early (n=112)	Delayed (n=119)	Total (n=231)
Number of patients alive at day 3	n=98	n=106	204
MIF, d3	83	75	158
IL-6, d3	83	75	158
IL-8, d3	84	75	159
IL-10, d3	78	73	151
IL-18, d3	84	76	160
TNFR-1, d3	83	76	159
TNFR-2, d3	83	76	159

Supplementary Figures

eFigure S1. – Kaplan-Meier analysis of patients who survived the first 90 days



HR, Hazard ratio; RRT, renal replacement therapy. Data from day 90 to day 365 were analyzed, excluding patients who died within the first 90 days after randomization.